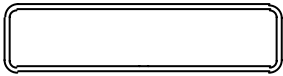
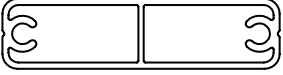
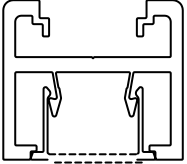
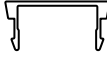
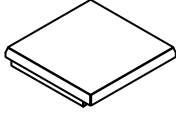

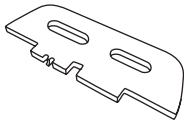
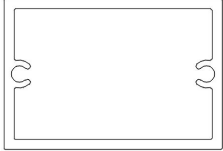
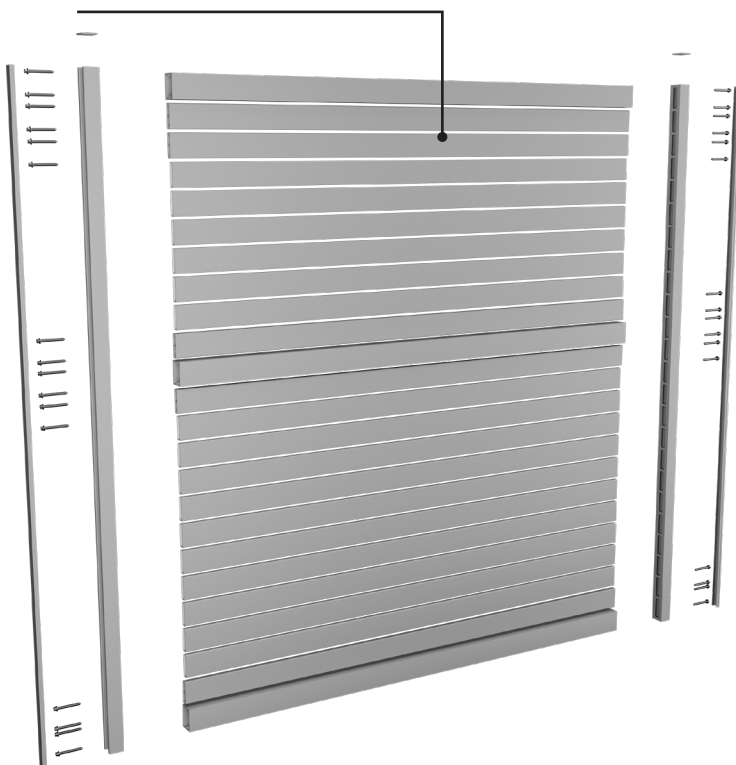
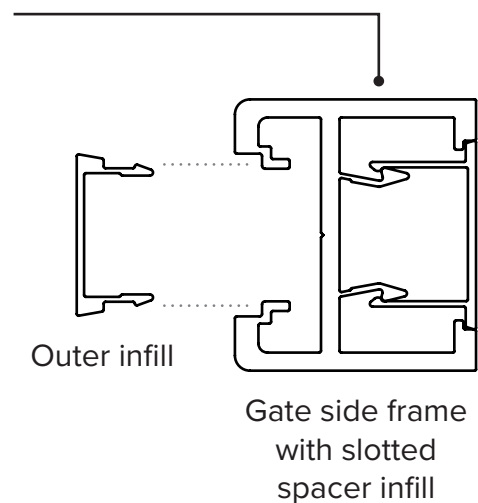


PROFILE	DESCRIPTION	LENGTH	
	2 1/2" x 5/8" slat (65x16mm slat)	69 1/8" (1759mm)	16
	2 1/2" x 5/8" gate slat (65x16mm gate slat)	69 1/4" (1762mm)	5
	Gate side frame with slotted spacer infill	5' 10 3/4" (1797mm)	2
	Outer infill	5' 10 3/4" (1797mm)	2
	Top cap		2
	Hex head screws		32
	D&D latch packer		1
	Gate Rail	67 9/16" (1720 mm)	3

EXPLODED VIEW



SIDE FRAME CONSTRUCTION



HEIGHT ADJUSTMENT OF GATE FRAME

- Using an aluminium saw, cut the **gate side frames** and **outer infills** to the required height. Gates are pre-made at 5' 10 3/4" (1797mm) high but can be height adjusted as required.

NOTE: Side frame heights are governed by the slotted spacer

WIDTH ADJUSTMENT OF SLATS

- Gates are pre-made at 5'10 7/8" (1800mm) wide "Overall gate width" (outer edge of gate frame to outer edge of gate frame). If a narrower width is required, refer to below: Using an aluminium cutting saw, cut all **slats** and **gate slats** to suit the required overall gate width. If height of gate is reduced, count how many slat spaces are required to suit that height.

Note: You must always use 5 x gate slats to make a gate

TO DETERMINE WHAT LENGTH TO CUT SLATS and GATE RAIL (top,middle,bottom) :-

NOTE

- (i.e. outer edge to outer edge of gate side frame)

TAKE NEW GATE WIDTH and SUBTRACT:-

(a) 1 1/2" = NEW SLAT LENGTH

(b) 3 9/64" = NEW RAIL LENGTHS

NOTE

- You need to allow for hinge and latch gaps. Check hinge and latch hardware specifications for gaps required and take this information into account when determining OVERALL GATE WIDTH



TOP OF GATE

TIP: Remove gate top caps before cutting down



Cut side frame at the top of slot to leave 3/8" space at the top and bottom of frame

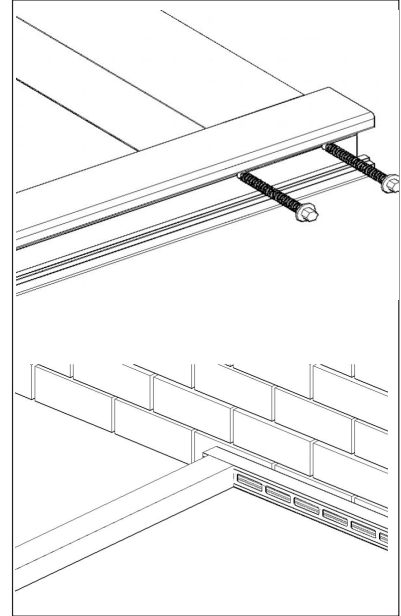
OFFCUT

(After side frame is cut down)

GATE SIDE FRAME



- 3** On a flat protected surface, lay 1x **gate side frame** with **slotted spacer infill** and attach 3 rails with supplied screws. Rest frame against a padded stop and place 4 bearers, as shown, between rails and fit slats into the punched holes of the slotted spacer. Tap slats into place.



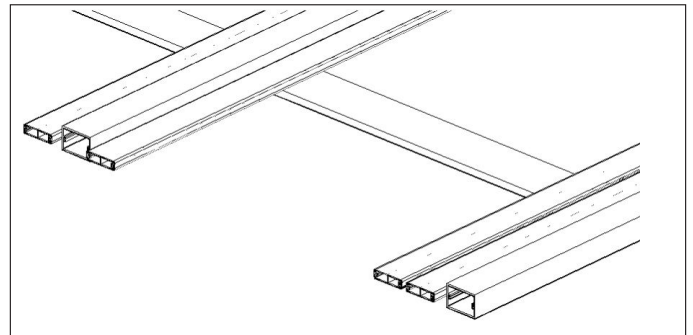
GATE RAIL POSITIONING

- 3x gate rails
- 1 at top of gate
- 1 at middle of gate
- 1 at bottom of gate

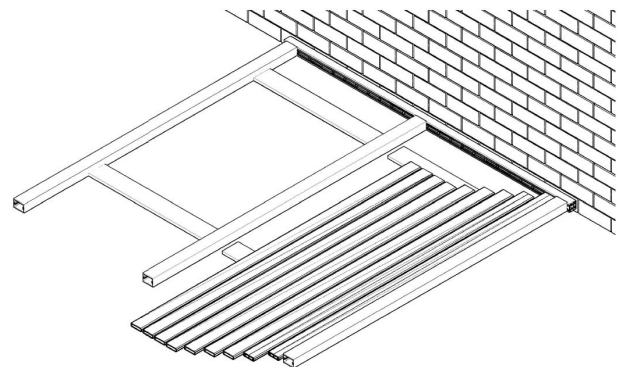
NOTE: 5x gate slats must be used even when gate height is reduced

4 **GATE SLAT POSITIONING**

- 2x gate slats fitted under top gate rail
- 1x gate slat fitted above middle gate rail and 1x gate slat fitted below middle gate rail
- 1x gate slat fitted above bottom gate rail

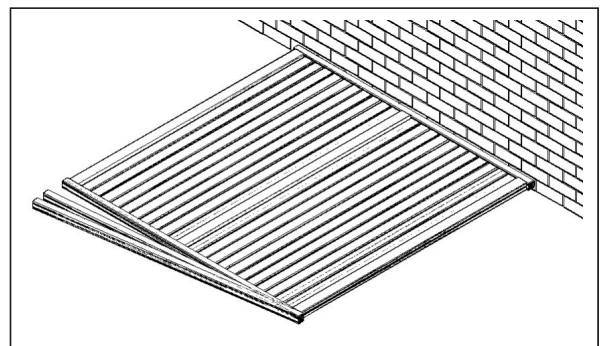


- 5** Place 4 bearers between gate rails and rest the slats on bearers.
- Feed slats into the punched holes, ensuring the gate slats are in the correct position.



- 6** Screw all **rail and gate slats** (2 screws per slat and rail, per side).
NOTE: AVOID OVER TIGHTENING. Set cordless drill to "screw function" to avoid breaking screw heads.

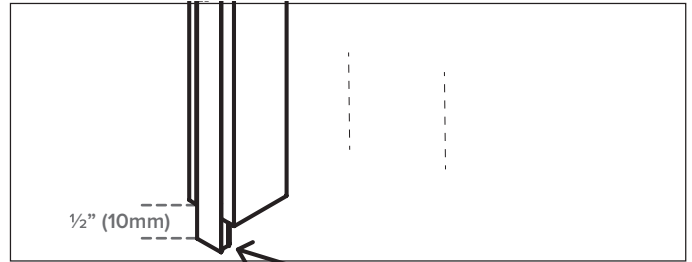
- 7** Engage the second **gate side frame** to the **slats** and tap the frame until all the slats are fully engaged.
TIP: Start at one end and work slats in from one end to the other.
Once 2nd gate side frame is fitted, screw off all rails and gate slats



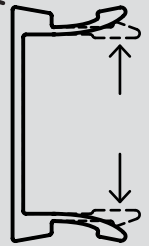
- 8** Slide in the 2 outer infills into position to hide screw heads

Slide 2x **outer infills** past end of **gate side frame** approximately $\frac{1}{2}$ " (10mm), then using pliers, bend inner legs of **outer infill** slightly outwards.

Tap **outer infill** back to level with **gate side frame**. This step is required to stop the **outer infill** from sliding down.

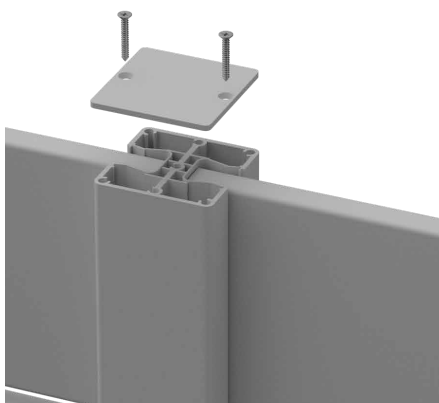
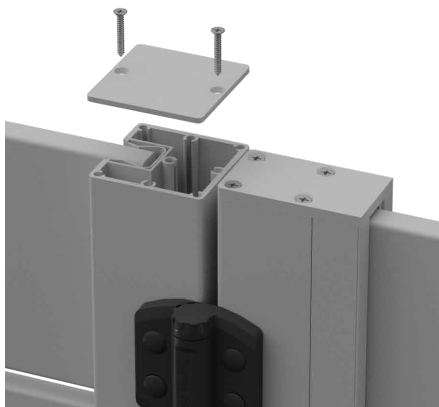


Important note:
Using pliers, bend inner legs of outer infill slightly outward to lock into position.

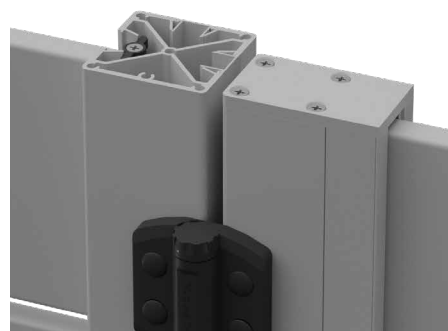
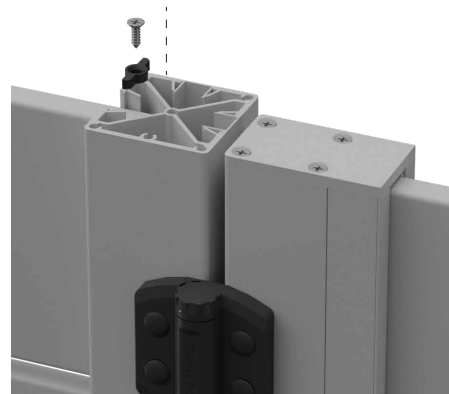


- 9** Insert top caps into side frames.

- 10** If using 1 or 2 way posts, orient top cap with 2 holes over the slats and screw off top cap into slats.



- If using 3 way post, ensure there is sufficient space at top of post. Prior to attaching top cap, attach a slat clip to top of top slat.



 aluminum
outlet

QUICK SCREEN USA.

COMPLETED GATE

