



QUICK SCREEN USA.

QUICKSCREEN ALUMINUM FENCING AND GATE SYSTEMS
SPECIFICATION SHEET - 65 SERIES

Material Specifications

Aluminum 6005/T5 Structural grade alloy

Universal Post - 2 9/16" x 2 9/16" x 2 9/16" (8 gauge)

Slat - 2 9/16" x 5/8" (16 gauge)

All Aluminum is manufactured to US and AUS standards including:

USA

ASTM B221 – Aluminum and Aluminum-Alloy Extruded Bars, Rods, Wire, Profiles, and Tubes

ASTM B557 – Tension Testing of Aluminum Products

ANSI H35.2-2017 - Tolerances aluminum extrusions

AUS

AS/NZS 1866 – Aluminium and aluminium alloys – Extruded rod, bar, solid and hollow shapes

AS/NZS 1664 – Aluminium structures

AS 2848.1 – Aluminium and aluminium alloys – Compositions and designation

Coating and Finishes:

AMMA 2604 - Finishing standard Inc

ASTM B 117 – Salt Spray (Corrosion) Testing

ASTM D3359 – Adhesion of Coatings

ASTM D1730 – Preparation of Aluminium Surfaces for Paints/Coatings

ASTM D4214 - Chalking Resistance.

Construction and Building applications.

AAMA 2604

ASCE SEI 7-10 - Minimum design loads for buildings and other structures

AS2159 - Soil properties for footing depths

AS1530 - Non combustible testing in accordance with ISO 1182.2010

Australia/NZ – AS/NZS 1530.3 D2525

72" wide x 71" high Quickscreen slat panel 3/8" spacing

- 2 x Universal posts (incl caps) (95" l)

- 24 x 2 9/16" x 5/8" slats (71" l)

- 48 x 3/8" snap in spacers

72" wide x 71" high Quickscreen slat panel 1/2" spacing

- 2 x Universal posts Incl caps (95" l)

- 23 x 2 9/16" x 5/8" slats (71" l)

- 46 x 1/2" snap in spacers

72" wide x 71" high Quickscreen slat panel 1" spacing

- 2 x Universal posts (incl caps) (95" l)

- 20 x 2 9/16" x 5/8" slats (71" l)

- 40 x 1" snap in spacers

96" wide x 71" high Quickscreen slat panel 3/8" spacing

- 2 x Universal posts (incl caps) (95" l)

- 24 x 2 9/16" x 5/8" slats (95" l)

- 48 x 3/8" snap in spacers

96" wide x 71" high Quickscreen slat panel 1/2" spacing

- 2 x Universal posts Incl caps (95" l)

- 23 x 2 9/16" x 5/8" slats (95" l)

- 46 x 1/2" snap in spacers

96" wide x 71" high Quickscreen slat panel 1" spacing

- 2 x Universal posts (incl caps) (95" l)

- 20 x 2 9/16" x 5/8" slats (95" l)

- 40 x 1" snap in spacers

Single Gate (42 wide) 3/8" Spacing

- 2 x gate frames Inc screw cover (72" l)

- 1 x Gate frame kit (4 caps and screws)

- SS304 screws HD 12G Qty

- 12 x 2 9/16" x 5/8" (cut into 2) (71" l)

- 48 x 3/8" snap in spacers

Single Gate (42 wide) 1/2" Spacing

- 2 x gate frames Inc screw cover (72" l)

- 1 x Gate frame kit (4 caps and screws)

- SS304 screws HD 12G Qty

- 12 x 2 9/16" x 5/8" (cut into 2) (71" l)

- 46 x 1/2" snap in spacers

Single Gate (42 wide) 1" Spacing

- 2 x gate frames Inc screw cover (72" l)

- 1 x Gate frame kit (4 caps and screws)

- SS304 screws HD 12G Qty

- 10 x 2 9/16" x 5/8" (cut into 2) (71" l)

- 40 x 1" snap in spacers

Double gate (150" wide)

- 4 x gate frames Inc screw cover (72" l)

- 4 x HD Top & Bottom rail

- 2 x Gate frame kit (4 caps and screws)

- SS304 screws HD 12G Qty

- 12G screws HD 2 9/16" l Qty 8

- 24 x 2 9/16" x 5/8" (cut into 2) (71" l)

- 96 x 3/8" snap in spacers

Double gate (150" wide)

- 4 x gate frames Inc screw cover (72" l)

- 4 x HD Top & Bottom rail

- 2 x Gate frame kit (4 caps and screws)

- SS304 screws HD 12G Qty

- 12G screws HD 2 9/16" l Qty 8

- 24 x 2 9/16" x 5/8" (cut into 2) (71" l)

- 92 x 1/2" snap in spacers

Double gate (150" wide)

- 4 x gate frames Inc screw cover (72" l)

- 4 x HD Top & Bottom rail

- 2 x Gate frame kit (4 caps and screws)

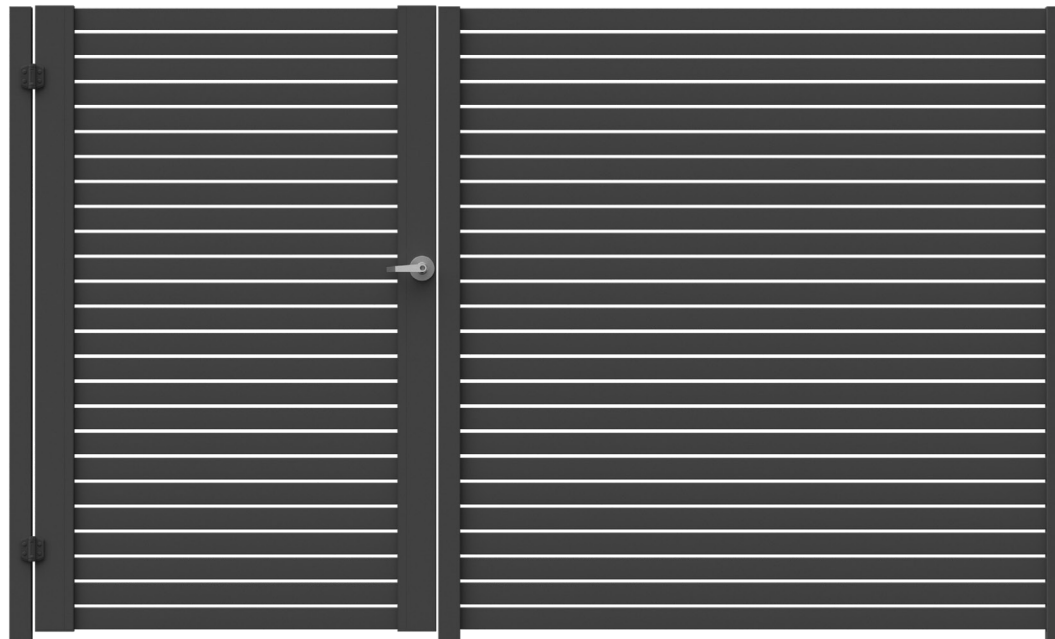
- SS304 screws HD 12G Qty

- 12G screws HD 2 9/16" l Qty 8

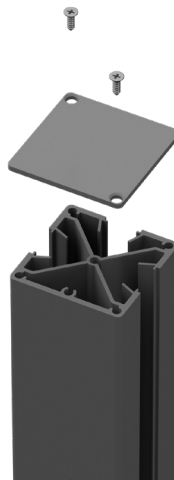
- 24 x 2 9/16" x 5/8" (cut into 2) (71" l)

- 80 x 1" snap in spacers

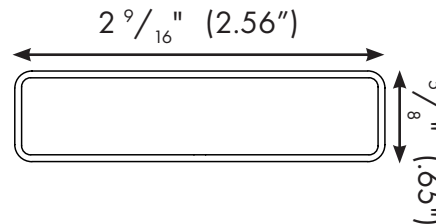
UNIVERSAL POST INSTALL METHOD



Universal Post



Slat



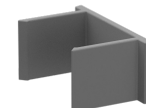
Slat Clip



Spacer blocks



3/8" SPACERS



1/2" SPACERS



1" SPACERS

Material Specifications

Aluminum 6005/T5 Structural grade alloy

Universal Post - 2 9/16" x 2 9/16" (8 gauge)

Slat - 2 9/16" x 5/8" (16 gauge)

All Aluminum is manufactured to US and AUS standards including:

- USA
- ASTM B221 – Aluminum and Aluminum-Alloy Extruded Bars, Rods, Wire, Profiles, and Tubes
- ASTM B557 – Tension Testing of Aluminum Products
- ANSI H35.2-2017 - Tolerances aluminum extrusions

- AUS
- AS/NZS 1866 – Aluminium and aluminium alloys – Extruded rod, bar, solid and hollow shapes
- AS/NZS 1664 – Aluminium structures
- AS 2848.1 – Aluminium and aluminium alloys – Compositions and designation

Coating and Finishes:

- AMMA 2604 - Finishing standard Inc
- ASTM B 117 – Salt Spray (Corrosion) Testing
- ASTM D3359 – Adhesion of Coatings
- ASTM D1730 – Preparation of Aluminum Surfaces for Paints/Coatings
- ASTM D4214 - Chalking Resistance.

Construction and Building applications.

- AAMA 2604
- ASCE SEI 7-10 - Minimum design loads for buildings and other structures
- AS2159 - Soil properties for footing depths
- AS1530 - Non combustible testing in accordance with ISO 1182.2010
- Australia/NZ – AS/NZS 1530.3 D2525

72" wide x 71" high Quickscreen slat panel 3/8" spacing

- 2 x Universal posts (incl caps) (95° I)
- 24 x 2 9/16" x 5/8" slats (71" I)
- 48 x 3/8" snap in spacers
- 2 x slat clips and screws

72" wide x 71" high Quickscreen slat panel 1/2" spacing

- 2 x Universal posts Incl caps (95° I)
- 23 x 2 9/16" x 5/8" slats (71" I)
- 46 x 1/2" snap in spacers
- 2 x slat clips and screws

72" wide x 71" high Quickscreen slat panel 1" spacing

- 2 x Universal posts (incl caps) (95° I)
- 20 x 2 9/16" x 5/8" slats (71" I)
- 40 x 1" snap in spacers
- 2 x slat clips and screws

96" wide x 71" high Quickscreen slat panel 3/8" spacing

- 2 x Universal posts (incl caps) (95° I)
- 24 x 2 9/16" x 5/8" slats (95" I)
- 48 x 3/8" snap in spacers
- 2 x slat clips and screws

96" wide x 71" high Quickscreen slat panel 1/2" spacing

- 2 x Universal posts Incl caps (95° I)
- 23 x 2 9/16" x 5/8" slats (95" I)
- 46 x 1/2" snap in spacers
- 2 x slat clips and screws

96" wide x 71" high Quickscreen slat panel 1" spacing

- 2 x Universal posts (incl caps) (95° I)
- 20 x 2 9/16" x 5/8" slats (95" I)
- 40 x 1" snap in spacers
- 2 x slat clips and screws



Powder coat colors —



Material Specifications

Aluminum 6005/T5 Structural grade alloy

Universal Post - 2 9/16" x 2 9/16" x 2 9/16" (8 gauge)

Slat - 2 9/16" x 5/8" (16 gauge)

All Aluminum is manufactured to US and AUS standards including:

USA
ASTM B221 – Aluminum and Aluminum-Alloy Extruded Bars, Rods, Wire, Profiles, and Tubes
ASTM B557 – Tension Testing of Aluminum Products
ANSI H35.2-2017 - Tolerances aluminum extrusions

AUS
AS/NZS 1866 – Aluminium and aluminium alloys – Extruded rod, bar, solid and hollow shapes
AS/NZS 1664 – Aluminium structures
AS 2848.1 – Aluminium and aluminium alloys – Compositions and designation

Coating and Finishes:

AMMA 2604 - Finishing standard Inc
ASTM B 117 – Salt Spray (Corrosion) Testing
ASTM D3359 – Adhesion of Coatings
ASTM D1730 – Preparation of Aluminum Surfaces for Paints/Coatings
ASTM D4214 - Chalking Resistance.

Construction and Building applications.

AAMA 2604
ASCE SEI 7-10 - Minimum design loads for buildings and other structures
AS2159 - Soil properties for footing depths
AS1530 - Non combustible testing in accordance with ISO 1182.2010
Australia/NZ – AS/NZS 1530.3 D2525

72" wide x 71" high Quickscreen slat panel 3/8" spacing

- 2 x Universal posts (incl caps) (95" l)
- 24 x 2 9/16" x 5/8" slats (71" l)
- 48 x 3/8" snap in spacers
- 2 x slat clips and screws

72" wide x 71" high Quickscreen slat panel 1/2" spacing

- 2 x Universal posts Incl caps (95" l)
- 23 x 2 9/16" x 5/8" slats (71" l)
- 46 x 1/2" snap in spacers
- 2 x slat clips and screws

72" wide x 71" high Quickscreen slat panel 1" spacing

- 2 x Universal posts (incl caps) (95" l)
- 20 x 2 9/16" x 5/8" slats (71" l)
- 40 x 1" snap in spacers
- 2 x slat clips and screws

96" wide x 71" high Quickscreen slat panel 3/8" spacing

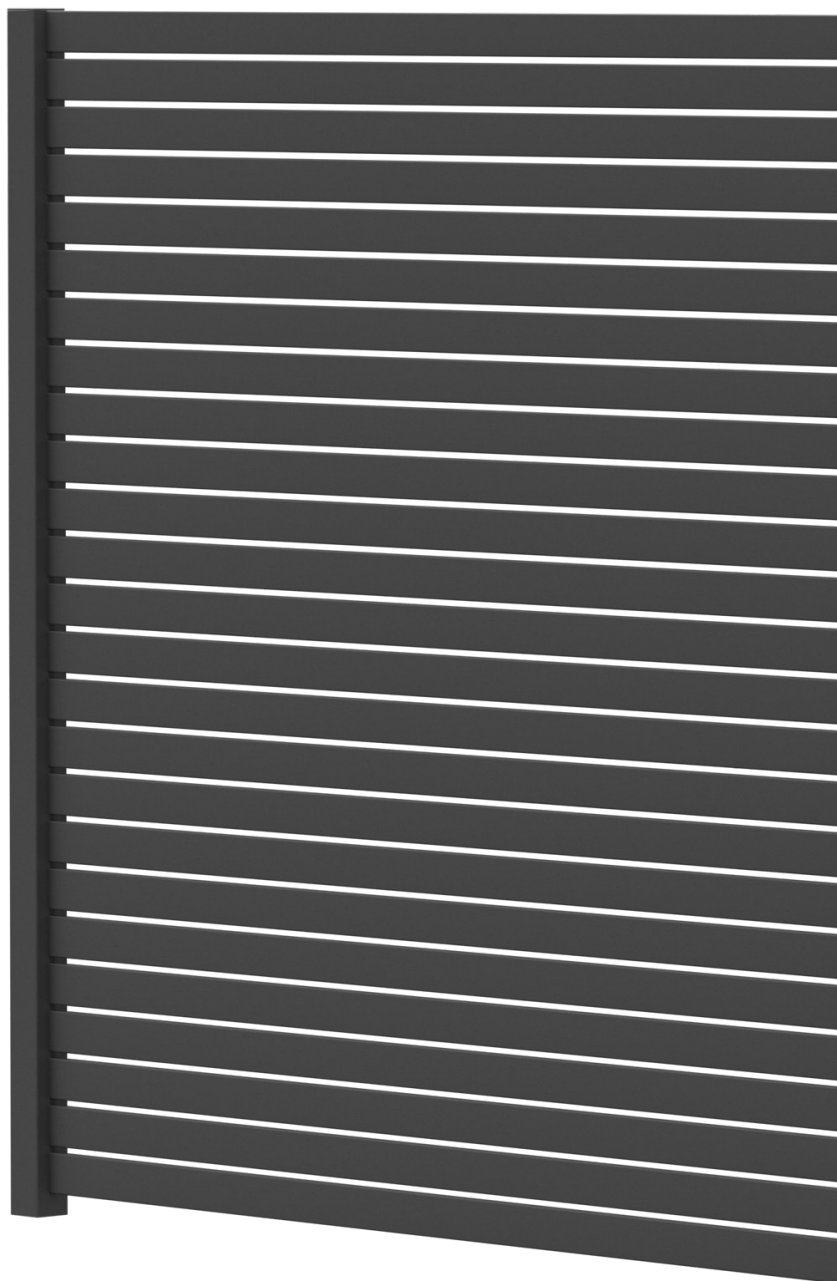
- 2 x Universal posts (incl caps) (95" l)
- 24 x 2 9/16" x 5/8" slats (95" l)
- 48 x 3/8" snap in spacers
- 2 x slat clips and screws

96" wide x 71" high Quickscreen slat panel 1/2" spacing

- 2 x Universal posts Incl caps (95" l)
- 23 x 2 9/16" x 5/8" slats (95" l)
- 46 x 1/2" snap in spacers
- 2 x slat clips and screws

96" wide x 71" high Quickscreen slat panel 1" spacing

- 2 x Universal posts (incl caps) (95" l)
- 20 x 2 9/16" x 5/8" slats (95" l)
- 40 x 1" snap in spacers
- 2 x slat clips and screws



Powder coat colors —



Material Specifications

Aluminum 6005/T5 Structural grade alloy

Blank Post - 2 9/16" x 2 9/16" (8 gauge)

Blank Post - 4" x 4" (6 gauge)

Slat - 2 9/16" x 5/8" (16 gauge)

Side Frame with Friction Insert and Top & Bottom Plates - 1.26" x 1.1" (14 gauge)

All Aluminum is manufactured to US and AUS standards including:

USA

ASTM B221 – Aluminum and Aluminum-Alloy Extruded Bars, Rods, Wire, Profiles, and Tubes

ASTM B557 – Tension Testing of Aluminum Products

ANSI H35.2-2017 - Tolerances aluminum extrusions

AUS

AS/NZS 1866 – Aluminium and aluminium alloys – Extruded rod, bar, solid and hollow shapes

AS/NZS 1664 – Aluminium structures

AS 2848.1 – Aluminium and aluminium alloys – Compositions and designation

Coating and Finishes:

AMMA 2604 - Finishing standard Inc

ASTM B 117 – Salt Spray (Corrosion) Testing

ASTM D3359 – Adhesion of Coatings

ASTM D1730 – Preparation of Aluminum Surfaces for Paints/Coatings

ASTM D4214 - Chalking Resistance.

Construction and Building applications.

AAMA 2604

ASCE SEI 7-10 - Minimum design loads for buildings and other structures

AS2159 - Soil properties for footing depths

AS1530 - Non combustible testing in accordance with ISO 1182,2010

Australia/NZ – AS/NZS 1530.3 D2525

72" wide x 71" high Quickscreen slot panel 3/8" spacing

- 2 x Blank Post - 2 9/16" x 2 9/16" (incl caps) (95" L)

OR Blank Post - 4" x 4" (incl caps) (95" L)

- 2 x Side Frame with Friction Insert and Top & Bottom Plates

- 24 x 2 9/16" x 5/8" slats (71" L)

- 48 x 3/8" snap in spacers

72" wide x 71" high Quickscreen slot panel 1/2" spacing

- 2 x Blank Post - 2 9/16" x 2 9/16" (incl caps) (95" L)

OR Blank Post - 4" x 4" (incl caps) (95" L)

- 2 x Side Frame with Friction Insert and Top & Bottom Plates

- 23 x 2 9/16" x 5/8" slats (71" L)

- 46 x 1/2" snap in spacers

72" wide x 71" high Quickscreen slot panel 1" spacing

- 2 x Blank Post - 2 9/16" x 2 9/16" (incl caps) (95" L)

OR Blank Post - 4" x 4" (incl caps) (95" L)

- 2 x Side Frame with Friction Insert and Top & Bottom Plates

- 20 x 2 9/16" x 5/8" slats (71" L)

- 40 x 1" snap in spacers

96" wide x 71" high Quickscreen slot panel 3/8" spacing

- 2 x Blank Post - 2 9/16" x 2 9/16" (incl caps) (95" L)

OR Blank Post - 4" x 4" (incl caps) (95" L)

- 2 x Side Frame with Friction Insert and Top & Bottom Plates

- 24 x 2 9/16" x 5/8" slats (95" L)

- 48 x 3/8" snap in spacers

96" wide x 71" high Quickscreen slot panel 1/2" spacing

- 2 x Blank Post - 2 9/16" x 2 9/16" (incl caps) (95" L)

OR Blank Post - 4" x 4" (incl caps) (95" L)

- 2 x Side Frame with Friction Insert and Top & Bottom Plates

- 23 x 2 9/16" x 5/8" slats (95" L)

- 46 x 1/2" snap in spacers

96" wide x 71" high Quickscreen slot panel 1" spacing

- 2 x Blank Post - 2 9/16" x 2 9/16" (incl caps) (95" L)

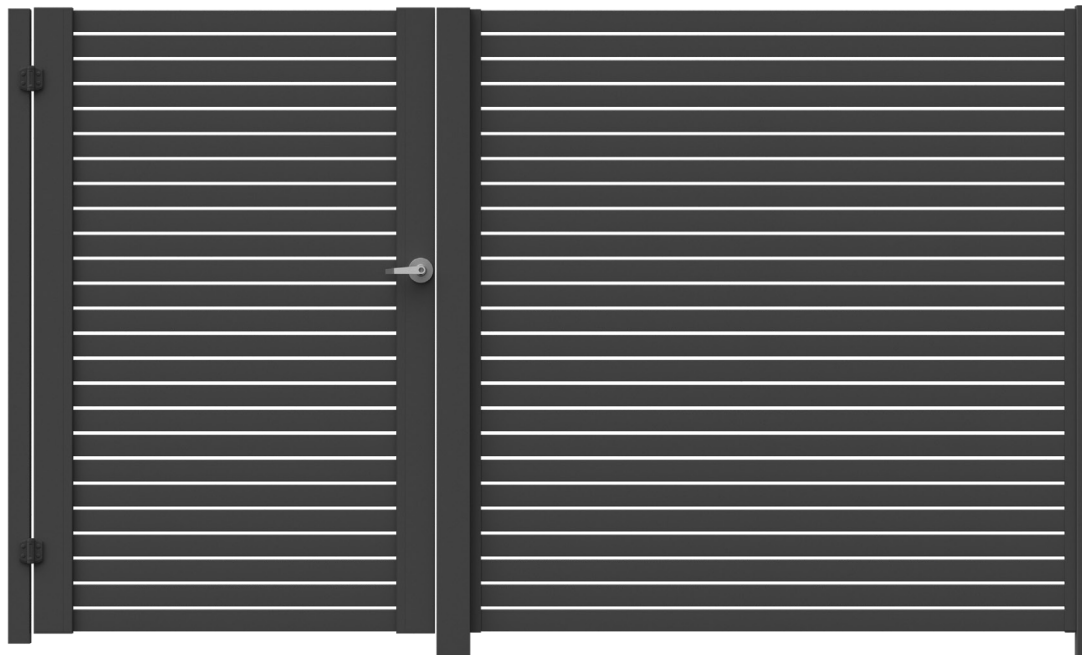
OR Blank Post - 4" x 4" (incl caps) (95" L)

- 2 x Side Frame with Friction Insert and Top & Bottom Plates

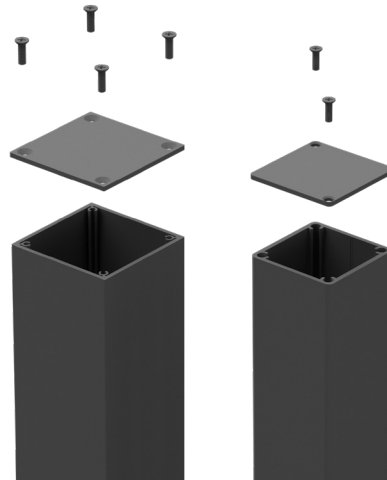
- 20 x 2 9/16" x 5/8" slats (95" L)

- 40 x 1" snap in spacers

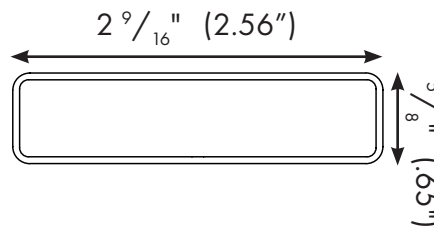
BLANK POST WITH SIDE FRAME INSTALL METHOD



**4" x 4" Post OR
2 9/16" x 2 9/16" Post**



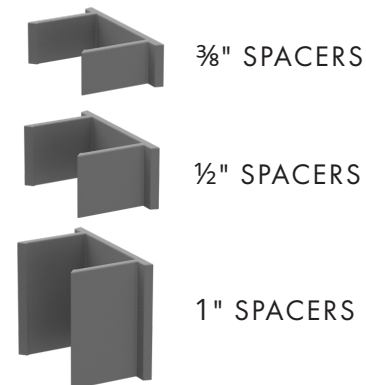
Slat



Side Frame



Spacer blocks



Powder coat colors —

MONUMENT

WOODLAND GRAY

PEARL WHITE

TEXTURED BLACK

Material Specifications

Aluminum 6005/T5 Structural grade alloy

Blank Post - 2 9/16" x 2 9/16" (8 gauge)

Blank Post - 4" x 4" (6 gauge)

Slot - 2 9/16" x 5/8" (16 gauge)

Side Frame with Friction Insert and Top & Bottom Plates - 1.26" x 1.1" (14 gauge)

All Aluminum is manufactured to US and AUS standards including:

- USA
- ASTM B221 – Aluminum and Aluminum-Alloy Extruded Bars, Rods, Wire, Profiles, and Tubes
- ASTM B557 – Tension Testing of Aluminum Products
- ANSI H35.2-2017 - Tolerances aluminum extrusions

- AUS
- AS/NZS 1866 – Aluminium and aluminium alloys – Extruded rod, bar, solid and hollow shapes
- AS/NZS 1664 – Aluminium structures
- AS 2848.1 – Aluminium and aluminium alloys – Compositions and designation

Coating and Finishes:

- AMMA 2604 - Finishing standard Inc
- ASTM B 117 – Salt Spray (Corrosion) Testing
- ASTM D3359 – Adhesion of Coatings
- ASTM D1730 – Preparation of Aluminum Surfaces for Paints/Coatings
- ASTM D4214 - Chalking Resistance.

Construction and Building applications.

- AAMA 2604
- ASCE SEI 7-10 - Minimum design loads for buildings and other structures
- AS2159 - Soil properties for footing depths
- AS1530 - Non combustible testing in accordance with ISO 1182.2010
- Australia/NZ – AS/NZS 1530.3 D2525

72" wide x 71" high Quickscreen slot panel 3/8" spacing

- 2 x Blank Post - 2 9/16" x 2 9/16" (incl caps) (95" L)
- OR Blank Post - 4" x 4" (incl caps) (95" L)
- 2 x Side Frame with Friction Insert and Top & Bottom Plates
- 24 x 2 9/16" x 5/8" slats (71" L)
- 48 x 3/8" snap in spacers

72" wide x 71" high Quickscreen slot panel 1/2" spacing

- 2 x Blank Post - 2 9/16" x 2 9/16" (incl caps) (95" L)
- OR Blank Post - 4" x 4" (incl caps) (95" L)
- 2 x Side Frame with Friction Insert and Top & Bottom Plates
- 23 x 2 9/16" x 5/8" slats (71" L)
- 46 x 1/2" snap in spacers

72" wide x 71" high Quickscreen slot panel 1" spacing

- 2 x Blank Post - 2 9/16" x 2 9/16" (incl caps) (95" L)
- OR Blank Post - 4" x 4" (incl caps) (95" L)
- 2 x Side Frame with Friction Insert and Top & Bottom Plates
- 20 x 2 9/16" x 5/8" slats (71" L)
- 40 x 1" snap in spacers

96" wide x 71" high Quickscreen slot panel 3/8" spacing

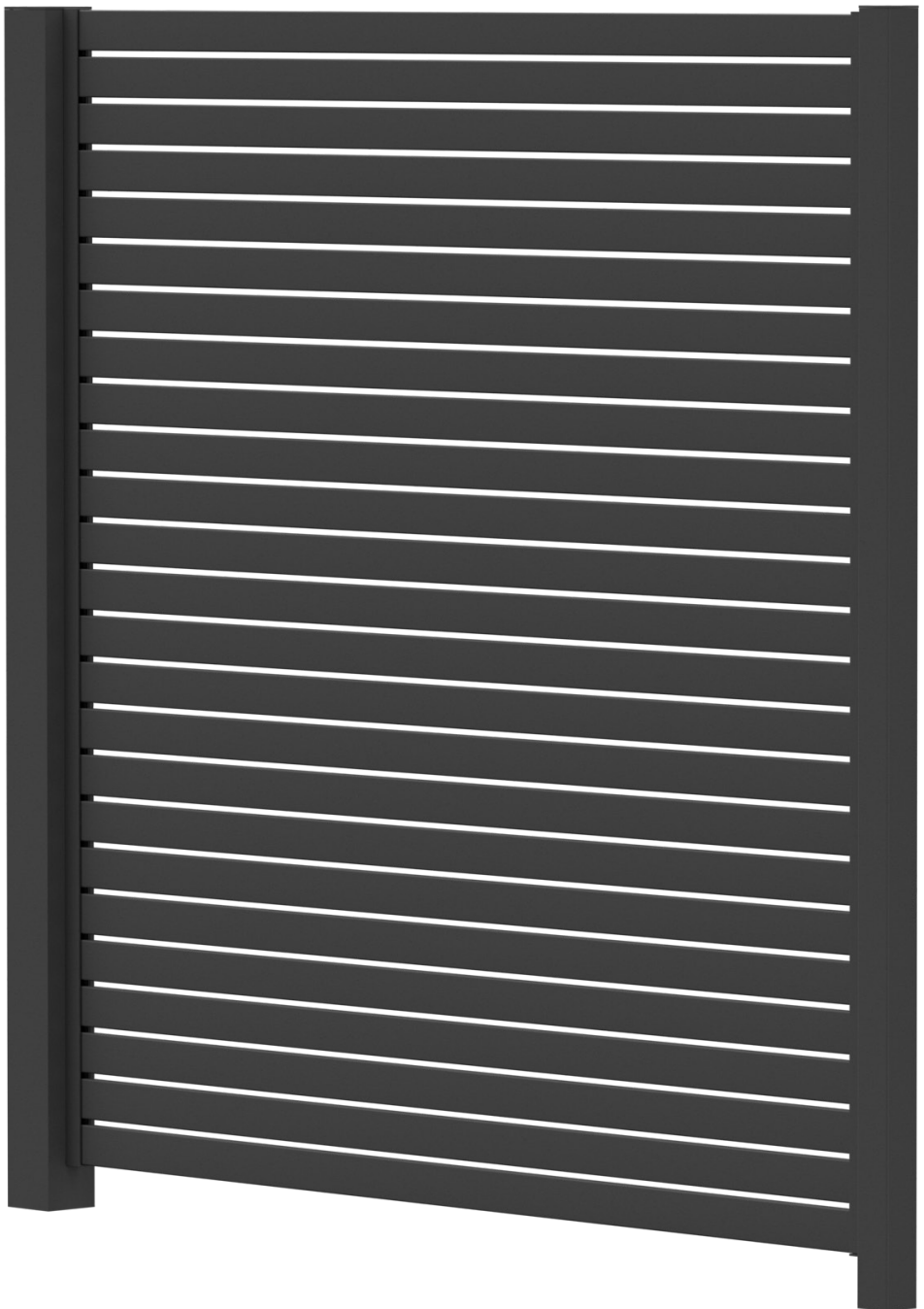
- 2 x Blank Post - 2 9/16" x 2 9/16" (incl caps) (95" L)
- OR Blank Post - 4" x 4" (incl caps) (95" L)
- 2 x Side Frame with Friction Insert and Top & Bottom Plates
- 24 x 2 9/16" x 5/8" slats (95" L)
- 48 x 3/8" snap in spacers

96" wide x 71" high Quickscreen slot panel 1/2" spacing

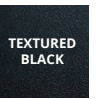
- 2 x Blank Post - 2 9/16" x 2 9/16" (incl caps) (95" L)
- OR Blank Post - 4" x 4" (incl caps) (95" L)
- 2 x Side Frame with Friction Insert and Top & Bottom Plates
- 23 x 2 9/16" x 5/8" slats (95" L)
- 46 x 1/2" snap in spacers

96" wide x 71" high Quickscreen slot panel 1" spacing

- 2 x Blank Post - 2 9/16" x 2 9/16" (incl caps) (95" L)
- OR Blank Post - 4" x 4" (incl caps) (95" L)
- 2 x Side Frame with Friction Insert and Top & Bottom Plates
- 20 x 2 9/16" x 5/8" slats (95" L)
- 40 x 1" snap in spacers



Powder coat colors —



Material Specifications

Aluminum 6005/T5 Structural grade alloy

Blank Post - 2 9/16" x 2 9/16" (8 gauge)

Blank Post - 4" x 4" (6 gauge)

Slot - 2 9/16" x 5/8" (16 gauge)

Side Frame with Friction Insert and Top & Bottom Plates - 1.26" x 1.1" (14 gauge)

All Aluminum is manufactured to US and AUS standards including:

- USA
 - ASTM B221 – Aluminum and Aluminum-Alloy Extruded Bars, Rods, Wire, Profiles, and Tubes
 - ASTM B557 – Tension Testing of Aluminum Products
 - ANSI H35.2-2017 - Tolerances aluminum extrusions

- AUS
 - AS/NZS 1866 – Aluminium and aluminium alloys – Extruded rod, bar, solid and hollow shapes
 - AS/NZS 1664 – Aluminium structures
 - AS 2848.1 – Aluminium and aluminium alloys – Compositions and designation

Coating and Finishes:

- AMMA 2604 - Finishing standard Inc
- ASTM B 117 – Salt Spray (Corrosion) Testing
- ASTM D3359 – Adhesion of Coatings
- ASTM D1730 – Preparation of Aluminum Surfaces for Paints/Coatings
- ASTM D4214 - Chalking Resistance.

Construction and Building applications:

- AAMA 2604
- ASCE SEI 7-10 - Minimum design loads for buildings and other structures
- AS2159 - Soil properties for footing depths
- AS1530 - Non combustible testing in accordance with ISO 1182.2010
- Australia/NZ – AS/NZS 1530.3 D2525

72" wide x 71" high Quickscreen slot panel 3/8" spacing

- 2 x Blank Post - 2 9/16" x 2 9/16" (incl caps) (95" L)
- OR Blank Post - 4" x 4" (incl caps) (95" L)
- 2 x Side Frame with Friction Insert and Top & Bottom Plates
- 24 x 2 9/16" x 5/8" slats (71" L)
- 48 x 3/8" snap in spacers

72" wide x 71" high Quickscreen slot panel 1/2" spacing

- 2 x Blank Post - 2 9/16" x 2 9/16" (incl caps) (95" L)
- OR Blank Post - 4" x 4" (incl caps) (95" L)
- 2 x Side Frame with Friction Insert and Top & Bottom Plates
- 23 x 2 9/16" x 5/8" slats (71" L)
- 46 x 1/2" snap in spacers

72" wide x 71" high Quickscreen slot panel 1" spacing

- 2 x Blank Post - 2 9/16" x 2 9/16" (incl caps) (95" L)
- OR Blank Post - 4" x 4" (incl caps) (95" L)
- 2 x Side Frame with Friction Insert and Top & Bottom Plates
- 20 x 2 9/16" x 5/8" slats (71" L)
- 40 x 1" snap in spacers

96" wide x 71" high Quickscreen slot panel 3/8" spacing

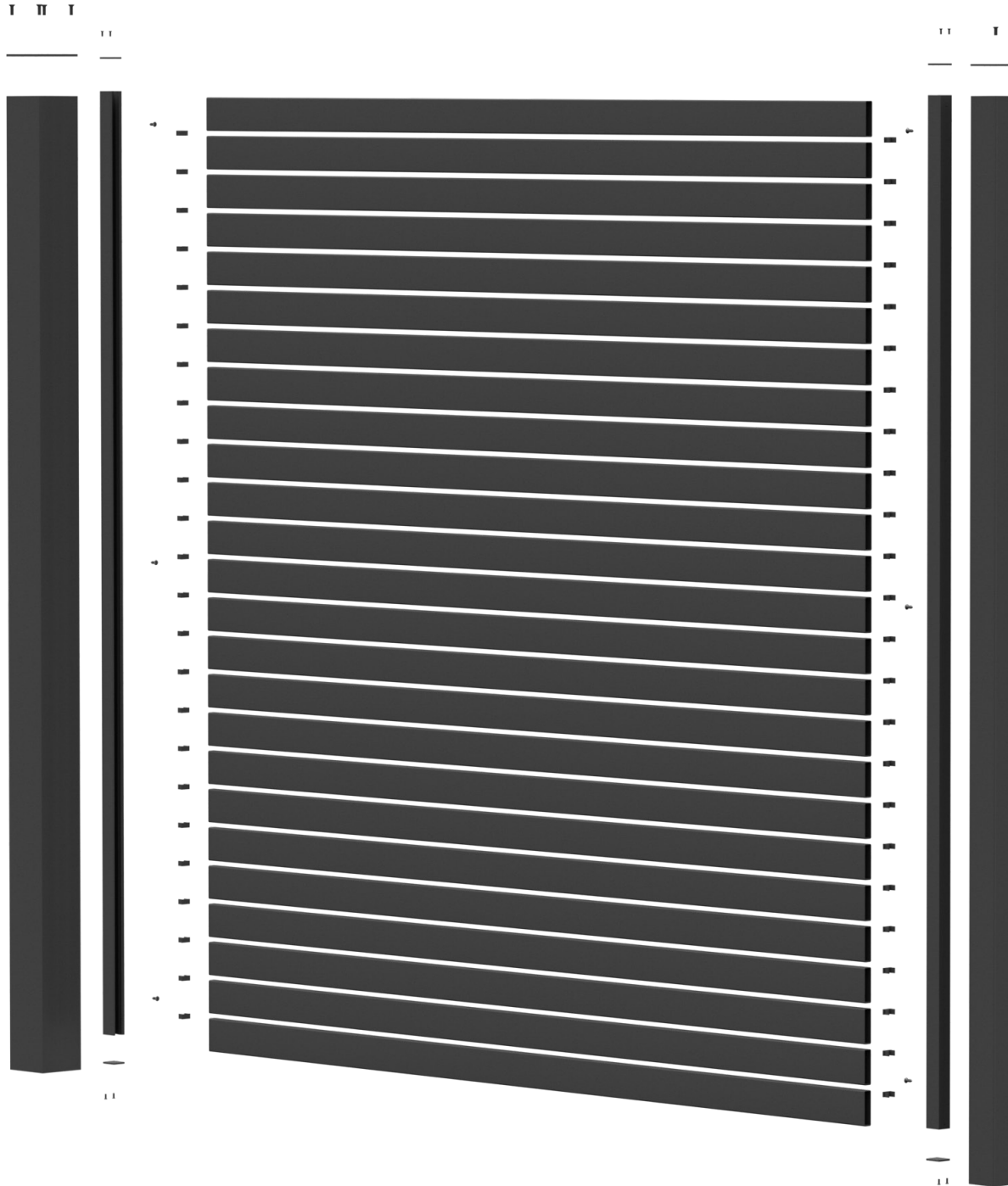
- 2 x Blank Post - 2 9/16" x 2 9/16" (incl caps) (95" L)
- OR Blank Post - 4" x 4" (incl caps) (95" L)
- 2 x Side Frame with Friction Insert and Top & Bottom Plates
- 24 x 2 9/16" x 5/8" slats (95" L)
- 48 x 3/8" snap in spacers

96" wide x 71" high Quickscreen slot panel 1/2" spacing

- 2 x Blank Post - 2 9/16" x 2 9/16" (incl caps) (95" L)
- OR Blank Post - 4" x 4" (incl caps) (95" L)
- 2 x Side Frame with Friction Insert and Top & Bottom Plates
- 23 x 2 9/16" x 5/8" slats (95" L)
- 46 x 1/2" snap in spacers

96" wide x 71" high Quickscreen slot panel 1" spacing

- 2 x Blank Post - 2 9/16" x 2 9/16" (incl caps) (95" L)
- OR Blank Post - 4" x 4" (incl caps) (95" L)
- 2 x Side Frame with Friction Insert and Top & Bottom Plates
- 20 x 2 9/16" x 5/8" slats (95" L)
- 40 x 1" snap in spacers



Powder coat colors —



Material Specifications

Aluminum 6005/15 Structural grade alloy

Univesal Post - 2 9/16" x 2 9/16" (8 gauge)

Slat - 2 9/16" x 5/8" (16 gauge)

All Aluminum is manufactured to US and AUS standards including:

USA

ASTM B221 – Aluminum and Aluminum-Alloy Extruded Bars, Rods, Wire, Profiles, and Tubes

ASTM B557 – Tension Testing of Aluminum Products

ANSI H35.2-2017 - Tolerances aluminum extrusions

AUS

AS/NZS 1866 – Aluminium and aluminium alloys – Extruded rod, bar, solid and hollow shapes

AS/NZS 1664 – Aluminium structures

AS 2848.1 – Aluminium and aluminium alloys – Compositions and designation

Coating and Finishes:

AMMA 2604 - Finishing standard Inc

ASTM B117 – Salt Spray (Corrosion) Testing

ASTM D3359 – Adhesion of Coatings

ASTM D1730 – Preparation of Aluminum Surfaces for Paints/Coatings

ASTM D4214 - Chalking Resistance.

Construction and Building applications.

AAMA 2604

ASCE SEI 7-10 - Minimum design loads for buildings and other structures

AS2159 - Soil properties for footing depths

AS1530 - Non combustible testing in accordance with ISO 1182:2010

Australia/NZ – AS/NZS 1530.3 D2525

Single Gate (42 wide) 3/8" Spacing

- 2 x gate frames Inc screw cover (72" L)

- 1 x Gate frame kit (4 caps and screws)

- SS304 screws HD 12G (Qty 20)

- 12 x 2 9/16" x 5/8" (cut into 2) (71" L)

- 48 x 3/8" snap in spacers

Single Gate (42 wide) 1/2" Spacing

- 2 x gate frames Inc screw cover (72" L)

- 1 x Gate frame kit (4 caps and screws)

- SS304 screws HD 12G (Qty 20)

- 12 x 2 9/16" x 5/8" (cut into 2) (71" L)

- 46 x 1/2" snap in spacers

Single Gate (42 wide) 1" Spacing

- 2 x gate frames Inc screw cover (72" L)

- 1 x Gate frame kit (4 caps and screws)

- SS304 screws HD 12G (Qty 20)

- 10 x 2 9/16" x 5/8" (cut into 2) (71" L)

- 40 x 1" snap in spacers

Gate Dimensions

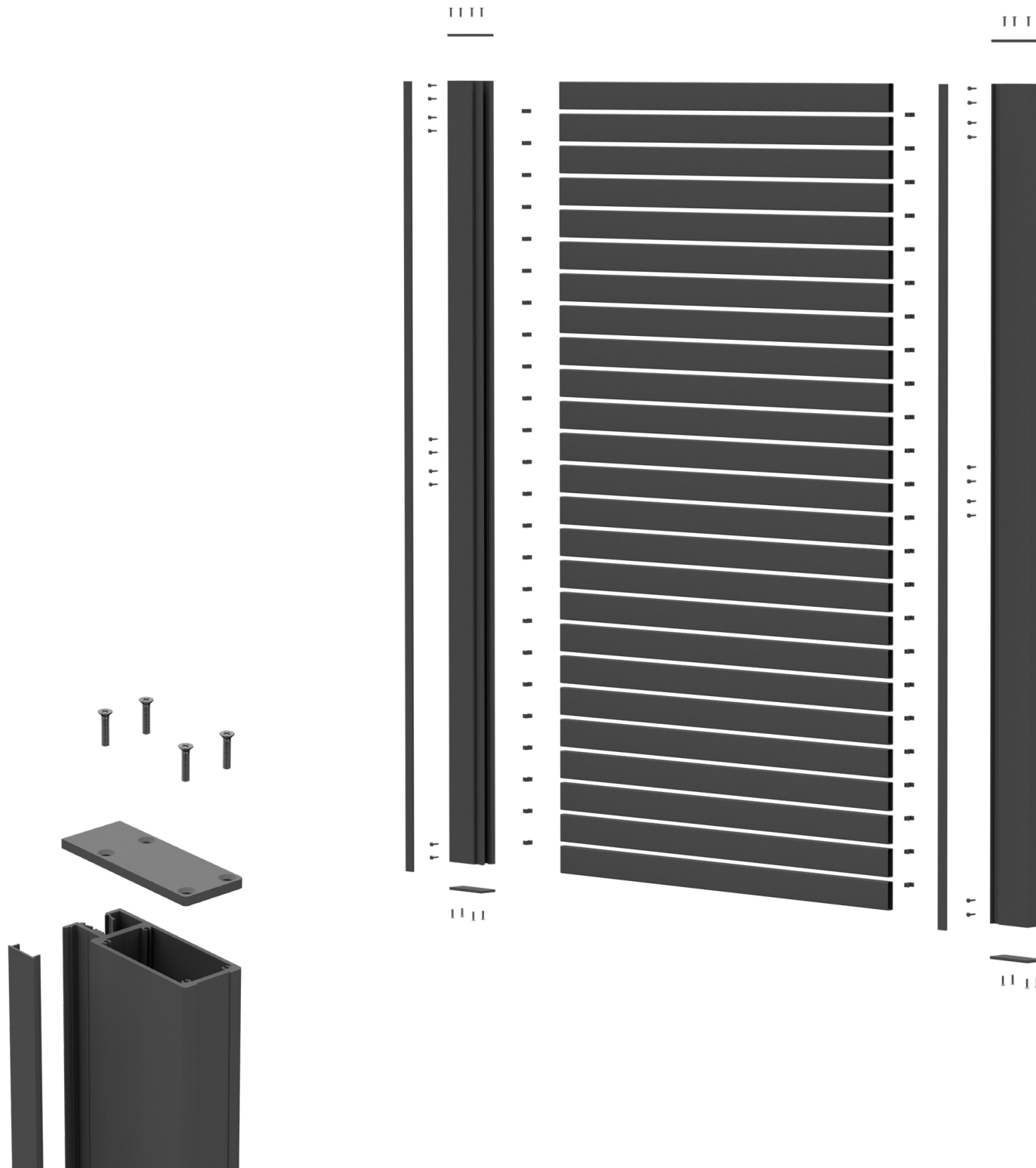
Gate is width adjustable - Min 2' up to 7' Wide (single leaf)

Once gate exceeds 5' wide need to use Heavy Duty Top and Bottom Rail

Gate is height adjustable - Min 3' up to 8' High (single leaf)

Gate will take most locks including mortise, cylinder and electronic key pad configurations.

GATE OPTIONS



Powder coat colors —

MONUMENT

WOODLAND
GRAY

PEARL
WHITE

TEXTURED
BLACK

Material Specifications

Aluminum 6005/T5 Structural grade alloy

Univesal Post - 2 9/16" x 2 9/16" x 2 9/16" (8 gauge)

Slat - 2 9/16" x 5/8" (16 gauge)

All Aluminum is manufactured to US and AUS standards including:

- USA
- ASTM B221 – Aluminum and Aluminum-Alloy Extruded Bars, Rods, Wire, Profiles, and Tubes
- ASTM B557 – Tension Testing of Aluminum Products
- ANSI H35.2-2017 - Tolerances aluminum extrusions

- AUS
- AS/NZS 1866 – Aluminium and aluminium alloys – Extruded rod, bar, solid and hollow shapes
- AS/NZS 1664 – Aluminium structures
- AS 2848.1 – Aluminium and aluminium alloys – Compositions and designation

Coating and Finishes:

- AMMA 2604 - Finishing standard Inc
- ASTM B 117 – Salt Spray (Corrosion) Testing
- ASTM D3359 – Adhesion of Coatings
- ASTM D1730 – Preparation of Aluminum Surfaces for Paints/Coatings
- ASTM D4214 - Chalking Resistance.

Construction and Building applications.

- AAMA 2604
- ASCE SEI 7-10 - Minimum design loads for buildings and other structures
- AS2159 - Soil properties for footing depths
- AS1530 - Non combustible testing in accordance with ISO 1182.2010
- Australia/NZ – AS/NZS 1530.3 D2525

Double gate (150" wide)

- 4 x gate frames Inc screw cover (72" L)
- 4 x HD Top & Bottom rail
- 2 x Gate frame kit [4 caps and screws]
- SS304 screws HD 12G Qty
- 12G screws HD 2 9/16" L Qty 8
- 24 x 2 9/16" x 5/8" [cut into 2] [71" L]
- 96 x 3/8" snap in spacers

Double gate (150" wide)

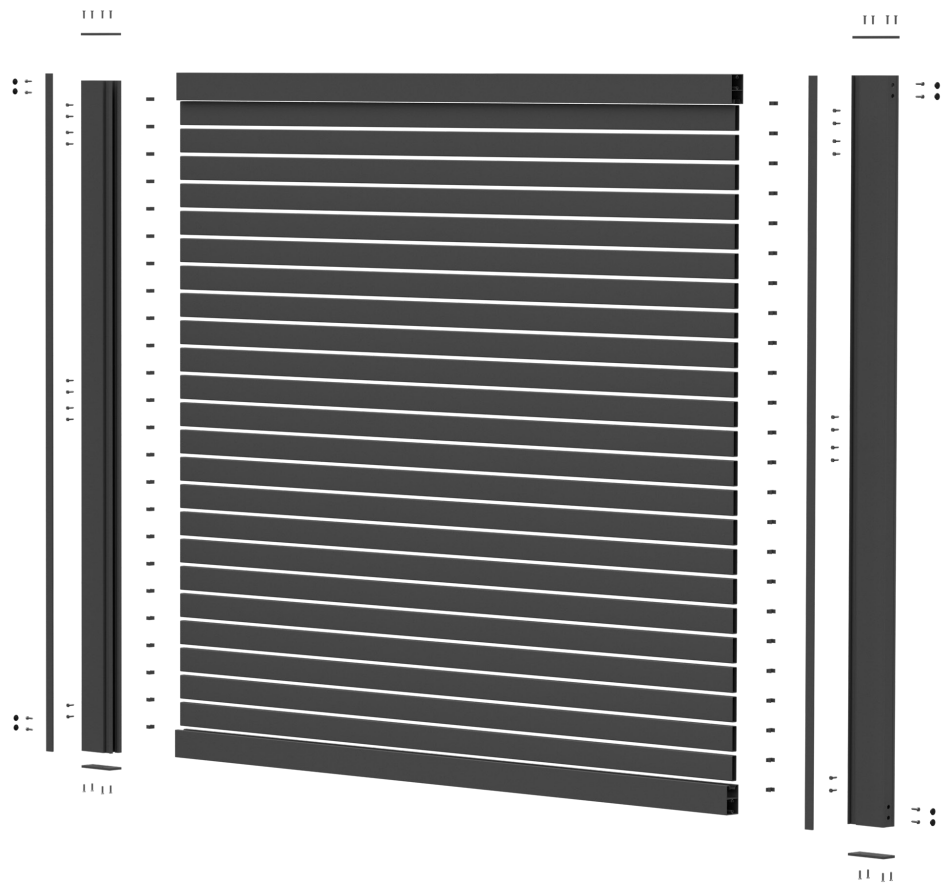
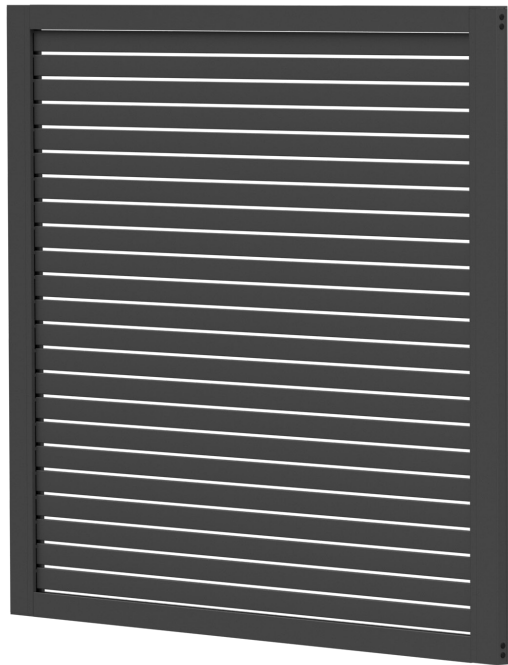
- 4 x gate frames Inc screw cover (72" L)
- 4 x HD Top & Bottom rail
- 2 x Gate frame kit [4 caps and screws]
- SS304 screws HD 12G Qty
- 12G screws HD 2 9/16" L Qty 8
- 24 x 2 9/16" x 5/8" [cut into 2] [71" L]
- 92 x 1/2 " snap in spacers

Double gate (150" wide)

- 4 x gate frames Inc screw cover (72" L)
- 4 x HD Top & Bottom rail
- 2 x Gate frame kit [4 caps and screws]
- SS304 screws HD 12G Qty
- 12G screws HD 2 9/16" L Qty 8
- 24 x 2 9/16" x 5/8" [cut into 2] [71" L]
- 80 x 1" snap in spacers

Gate Dimensions

Gate is width adjustable - Min 2' up to 7" Wide [single leaf]
 Once gate exceeds 5' wide need to use Heavy Duty Top and Bottom Rail
 Gate is height adjustable - Min 3' up to 8' High [single leaf]
 Gate will take most locks including mortise, cylinder and electronic key pad configurations.



Powder coat colors —

