



# QUICK SCREEN USA.

QUICKSCREEN ALUMINUM FENCING AND GATE SYSTEMS  
SPECIFICATION SHEET - 150 SERIES

**Material Specifications**

Aluminum 6005/T5 Structural grade alloy  
 Universal Post - 2 9/16" x 2 9/16" (8 gauge)  
 Slat - 6" x 5/8" (14 gauge)

**All Aluminum is manufactured to US and AUS standards including:**

USA  
 ASTM B221 - Aluminum and Aluminum-Alloy Extruded Bars, Rods, Wire, Profiles, and Tubes  
 ASTM B557 - Tension Testing of Aluminum Products  
 ANSI H35.2-2017 - Tolerances aluminum extrusions  
 AUS  
 AS/NZS 1866 - Aluminium and aluminium alloys - Extruded rod, bar, solid and hollow shapes  
 AS/NZS 1664 - Aluminium structures  
 AS 2848.1 - Aluminium and aluminium alloys - Compositions and designation

**Coating and Finishes:**

AMMA 2604 - Finishing standard Inc  
 ASTM B117 - Salt Spray (Corrosion) Testing  
 ASTM D3359 - Adhesion of Coatings  
 ASTM D1730 - Preparation of Aluminum Surfaces for Paints/Coatings  
 ASTM D4214 - Chalking Resistance

**Construction and Building applications.**

AAMA 2604  
 ASCE SEI 7-10 - Minimum design loads for buildings and other structures  
 AS2159 - Soil properties for footing depths  
 AS1530 - Non combustible testing in accordance with ISO 1182:2010  
 Australia/NZ - AS/NZS 1530.3 D2525

**72" wide x 71" high Quickscreen slat panel 3/8" spacing**

- 2 x Universal posts (incl caps) (95" l)
- 11 x 6" x 5/8" slats (71" l)
- 22 x 3/8" snap in spacers

**72" wide x 71" high Quickscreen slat panel 1/2" spacing**

- 2 x Universal posts Incl caps (95" l)
- 11 x 6" x 5/8" slats (71" l)
- 22 x 1/2" snap in spacers

**72" wide x 71" high Quickscreen slat panel 1" spacing**

- 2 x Universal posts (incl caps) (95" l)
- 10 x 6" x 5/8" slats (71" l)
- 20 x 1" snap in spacers

**96" wide x 71" high Quickscreen slat panel 3/8" spacing**

- 2 x Universal posts (incl caps) (95" l)
- 11 x 6" x 5/8" slats (95" l)
- 22 x 3/8" snap in spacers

**96" wide x 71" high Quickscreen slat panel 1/2" spacing**

- 2 x Universal posts Incl caps (95" l)
- 11 x 6" x 5/8" slats (95" l)
- 22 x 1/2" snap in spacers

**96" wide x 71" high Quickscreen slat panel 1" spacing**

- 2 x Universal posts (incl caps) (95" l)
- 10 x 6" x 5/8" slats (95" l)
- 20 x 1" snap in spacers

**Single Gate (42 wide) 3/8" Spacing**

- 2 x gate frames Inc screw cover (72" l)
- 1 x Gate frame kit (4 caps and screws)
- SS304 screws HD 12G Qty
- 6 x 6" x 5/8" slats (cut into 2) (71" l)
- 22 x 3/8" snap in spacers

**Single Gate (42 wide) 1/2" Spacing**

- 2 x gate frames Inc screw cover (72" l)
- 1 x Gate frame kit (4 caps and screws)
- SS304 screws HD 12G Qty
- 6 x 6" x 5/8" slats (cut into 2) (71" l)
- 22 x 1/2" snap in spacers

**Single Gate (42 wide) 1" Spacing**

- 2 x gate frames Inc screw cover (72" l)
- 1 x Gate frame kit (4 caps and screws)
- SS304 screws HD 12G Qty
- 5 x 6" x 5/8" slats (cut into 2) (71" l)
- 20 x 1" snap in spacers

**Double gate ( 192" wide )**

- 4 x gate frames Inc screw cover (72" l)
- 2 x Gate frame kit (4 caps and screws)
- SS304 screws HD 12G Qty
- 21 x 6" x 5/8" slats (95" l)
- 44 x 3/8" snap in spacers

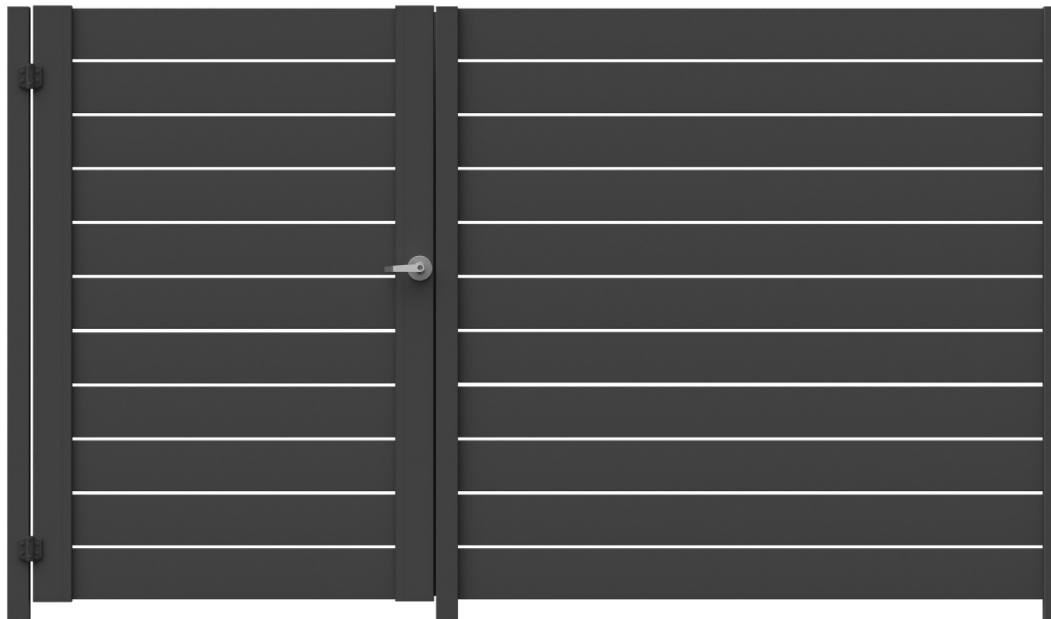
**Double gate ( 192" wide )**

- 4 x gate frames Inc screw cover (72" l)
- 2 x Gate frame kit (4 caps and screws)
- SS304 screws HD 12G Qty
- 21 x 6" x 5/8" slats (95" l)
- 44 x 1/2" snap in spacers

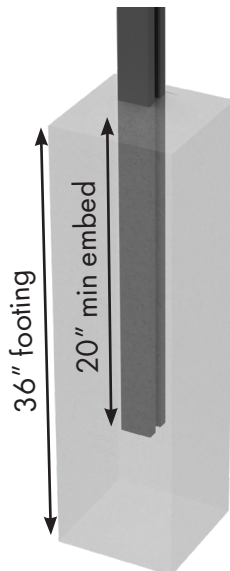
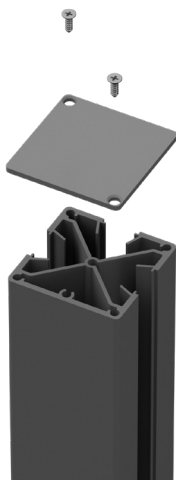
**Double gate ( 192" wide )**

- 4 x gate frames Inc screw cover (72" l)
- 2 x Gate frame kit (4 caps and screws)
- SS304 screws HD 12G Qty
- 20 x 6" x 5/8" slats (95" l)
- 40 x 1" snap in spacers

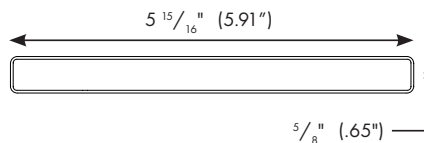
# UNIVERSAL POST INSTALL METHOD



## Universal Post



## Slat



WALL THICKNESS: 14 GAUGE  
 F\*<sub>TU</sub> - 262MPa

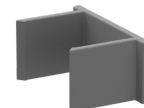
## Slat Clip



## Spacer blocks



3/8" SPACERS



1/2" SPACERS



1" SPACERS

**Material Specifications**

Aluminum 6005/T5 Structural grade alloy

Universal Post - 2 9/16" x 2 9/16" (8 gauge)

Slat - 6" x 5/8" (14 gauge)

**All Aluminum is manufactured to US and AUS standards including:**

- USA
  - ASTM B221 – Aluminum and Aluminum-Alloy Extruded Bars, Rods, Wire, Profiles, and Tubes
  - ASTM B557 – Tension Testing of Aluminum Products
  - ANSI H35.2-2017 - Tolerances aluminum extrusions
- AUS
  - AS/NZS 1866 – Aluminium and aluminium alloys – Extruded rod, bar, solid and hollow shapes
  - AS/NZS 1664 – Aluminium structures
  - AS 2848.1 – Aluminium and aluminium alloys – Compositions and designation

**Coating and Finishes:**

- AMMA 2604 - Finishing standard Inc
- ASTM B117 – Salt Spray (Corrosion) Testing
- ASTM D3359 – Adhesion of Coatings
- ASTM D1730 – Preparation of Aluminum Surfaces for Paints/Coatings
- ASTM D4214 - Chalking Resistance.

**Construction and Building applications.**

- AAMA 2604
- ASCE SEI 7-10 - Minimum design loads for buildings and other structures
- AS2159 - Soil properties for footing depths
- AS1530 - Non combustible testing in accordance with ISO 1182.2010
- Australia/NZ – AS/NZS 1530.3 D2525

**72" wide x 71" high Quickscreen slat panel 3/8" spacing**

- 2 x Universal posts ( incl caps ) (95" L)
- 11 x 6"x 5/8" slats (71" L)
- 22 x 3/8" snap in spacers

**72" wide x 71" high Quickscreen slat panel 1/2" spacing**

- 2 x Universal posts Incl caps (95" L)
- 11 x 6"x 5/8" slats (71" L)
- 22 x 1/2" snap in spacers

**72" wide x 71" high Quickscreen slat panel 1" spacing**

- 2 x Universal posts ( incl caps ) (95" L)
- 10 x 6"x 5/8" slats (71" L)
- 20 x 1" snap in spacers

**96" wide x 71" high Quickscreen slat panel 3/8" spacing**

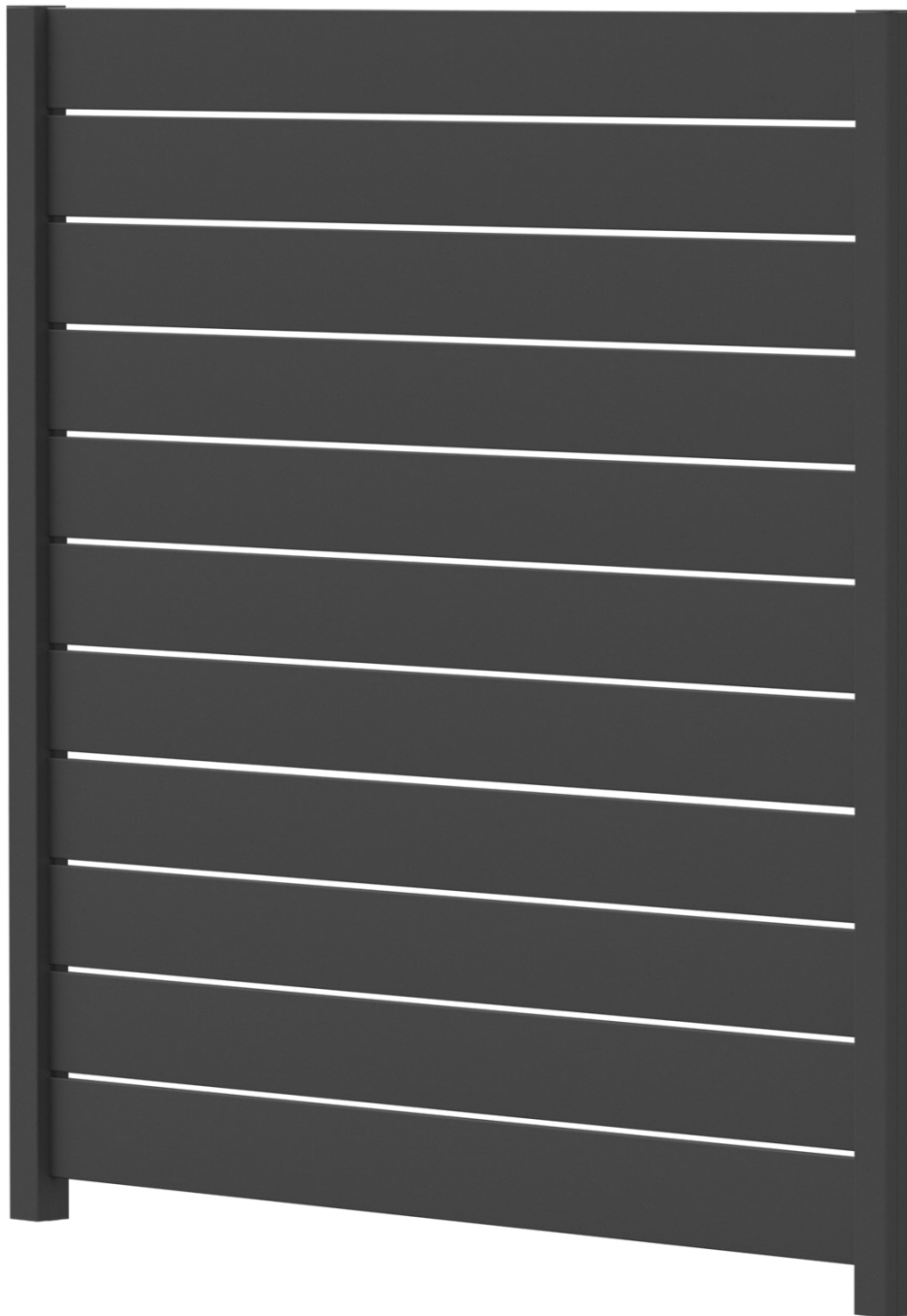
- 2 x Universal posts ( incl caps ) (95" L)
- 11 x 6"x 5/8" slats (95" L)
- 22 x 3/8" snap in spacers

**96" wide x 71" high Quickscreen slat panel 1/2" spacing**

- 2 x Universal posts Incl caps (95" L)
- 11 x 6"x 5/8" slats (95" L)
- 22 x 1/2" snap in spacers

**96" wide x 71" high Quickscreen slat panel 1" spacing**

- 2 x Universal posts ( incl caps ) (95" L)
- 10 x 6"x 5/8" slats (95" L)
- 20 x 1" snap in spacers



**Powder coat colors —**



**Material Specifications**

Aluminum 6005/T5 Structural grade alloy

Universal Post - 2 9/16" x 2 9/16" (8 gauge)

Slat - 6" x 5/8" (14 gauge)

**All Aluminum is manufactured to US and AUS standards including:**

**USA**

ASTM B221 - Aluminum and Aluminum-Alloy Extruded Bars, Rods, Wire, Profiles, and Tubes

ASTM B557 - Tension Testing of Aluminum Products

ANSI H35.2-2017 - Tolerances aluminum extrusions

**AUS**

AS/NZS 1866 - Aluminium and aluminium alloys - Extruded rod, bar, solid and hollow shapes

AS/NZS 1664 - Aluminium structures

AS 2848.1 - Aluminium and aluminium alloys - Compositions and designation

**Coating and Finishes:**

AMMA 2604 - Finishing standard Inc

ASTM B117 - Salt Spray (Corrosion) Testing

ASTM D3359 - Adhesion of Coatings

ASTM D1730 - Preparation of Aluminum Surfaces for Paints/Coatings

ASTM D4214 - Chalking Resistance

**Construction and Building applications**

AAMA 2604

ASCE SEI 7-10 - Minimum design loads for buildings and other structures

AS2159 - Soil properties for footing depths

AS1530 - Non combustible testing in accordance with ISO 1182:2010

Australia/NZ - AS/NZS 1530.3 D2525

**72" wide x 71" high Quickscreen slat panel 3/8" spacing**

- 2 x Universal posts (incl caps) (95" L)

- 11 x 6"x 5/8" slats (71" L)

- 22 x 3/8" snap in spacers

**72" wide x 71" high Quickscreen slat panel 1/2" spacing**

- 2 x Universal posts Incl caps (95" L)

- 11 x 6"x 5/8" slats (71" L)

- 22 x 1/2" snap in spacers

**72" wide x 71" high Quickscreen slat panel 1" spacing**

- 2 x Universal posts (incl caps) (95" L)

- 10 x 6"x 5/8" slats (71" L)

- 20 x 1" snap in spacers

**96" wide x 71" high Quickscreen slat panel 3/8" spacing**

- 2 x Universal posts (incl caps) (95" L)

- 11 x 6"x 5/8" slats (95" L)

- 22 x 3/8" snap in spacers

**96" wide x 71" high Quickscreen slat panel 1/2" spacing**

- 2 x Universal posts Incl caps (95" L)

- 11 x 6"x 5/8" slats (95" L)

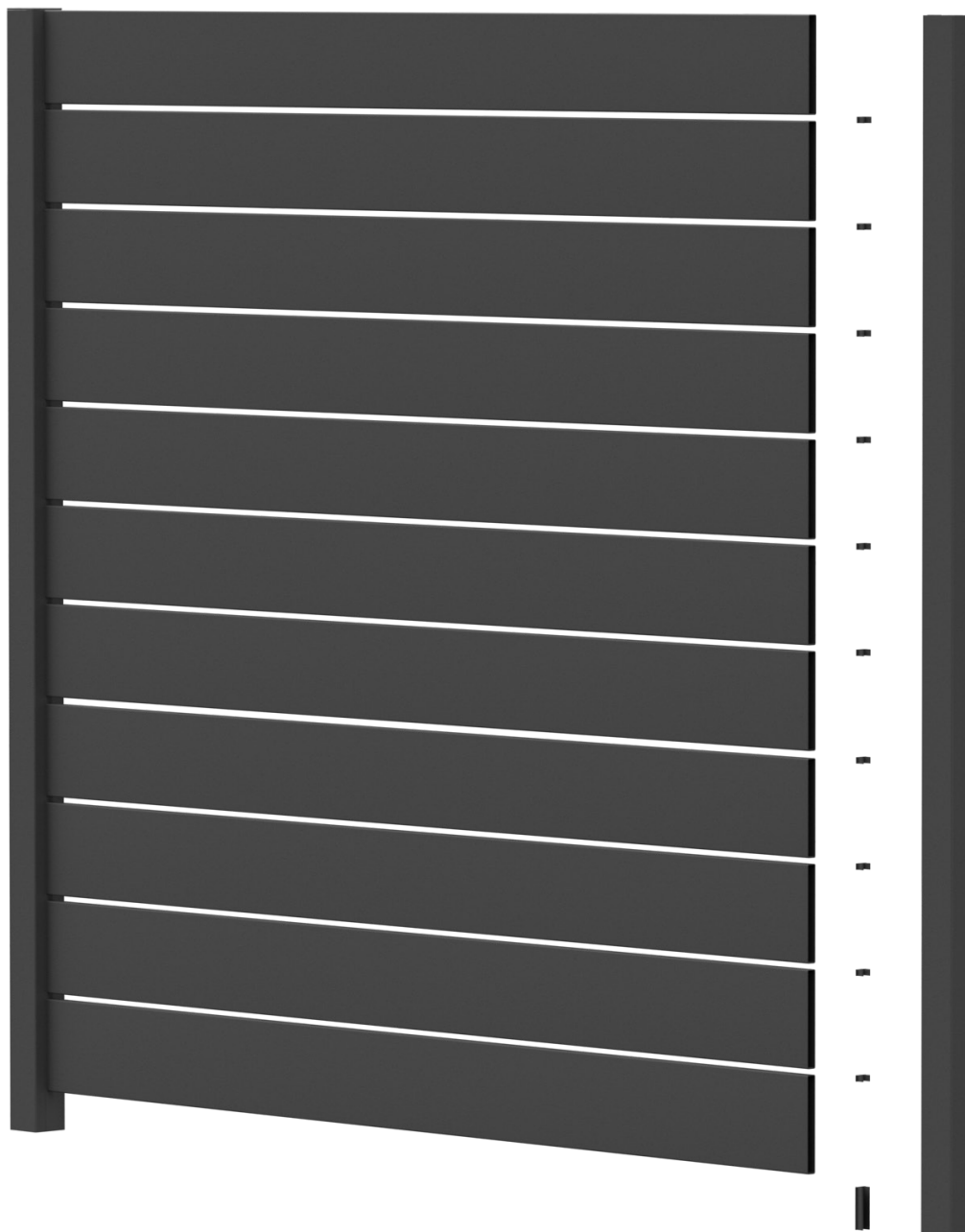
- 22 x 1/2" snap in spacers

**96" wide x 71" high Quickscreen slat panel 1" spacing**

- 2 x Universal posts (incl caps) (95" L)

- 10 x 6"x 5/8" slats (95" L)

- 20 x 1" snap in spacers



**Powder coat colors —**



**Material Specifications**

Aluminum 6005/T5 Structural grade alloy

Blank Post - 2 9/16" x 2 9/16" (8 gauge)

Blank Post - 4" x 4" (6 gauge)

Slat - 6" x 5/8" (14 gauge)

Side Frame with Friction Insert and Top & Bottom Plates - 1.26" x 1.1" (14 gauge)

**All Aluminum is manufactured to US and AUS standards including:**

USA

ASTM B221 - Aluminum and Aluminum-Alloy Extruded Bars, Rods, Wire, Profiles, and Tubes

ASTM B557 - Tension Testing of Aluminum Products

ANSI H35.2-2017 - Tolerances aluminum extrusions

AUS

AS/NZS 1866 - Aluminium and aluminium alloys - Extruded rod, bar, solid and hollow shapes

AS/NZS 1664 - Aluminium structures

AS 2848.1 - Aluminium and aluminium alloys - Compositions and designation

**Coating and Finishes:**

AMMA 2604 - Finishing standard Inc

ASTM B117 - Salt Spray (Corrosion) Testing

ASTM D3359 - Adhesion of Coatings

ASTM D1730 - Preparation of Aluminum Surfaces for Paints/Coatings

ASTM D4214 - Chalking Resistance.

**Construction and Building applications:**

AAMA 2604

ASCE SEI 7-10 - Minimum design loads for buildings and other structures

AS2159 - Soil properties for footing depths

AS1530 - Non combustible testing in accordance with ISO 1182.2010

Australia/NZ - AS/NZS 1530.3 D2525

**72" wide x 71" high Quickscreen slat panel 3/8" spacing**

- 2 x Blank Post - 2 9/16" x 2 9/16" (incl caps) (95" L)

OR Blank Post - 4" x 4" (incl caps) (95" L)

- 2 x Side Frame with Friction Insert and Top & Bottom Plates

- 11 x 6" x 5/8" slats (71" L)

- 48 x 3/8" snap in spacers

**72" wide x 71" high Quickscreen slat panel 1/2" spacing**

- 2 x Blank Post - 2 9/16" x 2 9/16" (incl caps) (95" L)

OR Blank Post - 4" x 4" (incl caps) (95" L)

- 2 x Side Frame with Friction Insert and Top & Bottom Plates

- 11 x 6" x 5/8" slats (71" L)

- 46 x 1/2" snap in spacers

**72" wide x 71" high Quickscreen slat panel 1" spacing**

- 2 x Blank Post - 2 9/16" x 2 9/16" (incl caps) (95" L)

OR Blank Post - 4" x 4" (incl caps) (95" L)

- 2 x Side Frame with Friction Insert and Top & Bottom Plates

- 10 x 6" x 5/8" slats (71" L)

- 40 x 1" snap in spacers

**96" wide x 71" high Quickscreen slat panel 3/8" spacing**

- 2 x Blank Post - 2 9/16" x 2 9/16" (incl caps) (95" L)

OR Blank Post - 4" x 4" (incl caps) (95" L)

- 2 x Side Frame with Friction Insert and Top & Bottom Plates

- 11 x 6" x 5/8" slats (95" L)

- 22 x 3/8" snap in spacers

**96" wide x 71" high Quickscreen slat panel 1/2" spacing**

- 2 x Blank Post - 2 9/16" x 2 9/16" (incl caps) (95" L)

OR Blank Post - 4" x 4" (incl caps) (95" L)

- 2 x Side Frame with Friction Insert and Top & Bottom Plates

- 11 x 6" x 5/8" slats (95" L)

- 22 x 1/2" snap in spacers

**96" wide x 71" high Quickscreen slat panel 1" spacing**

- 2 x Blank Post - 2 9/16" x 2 9/16" (incl caps) (95" L)

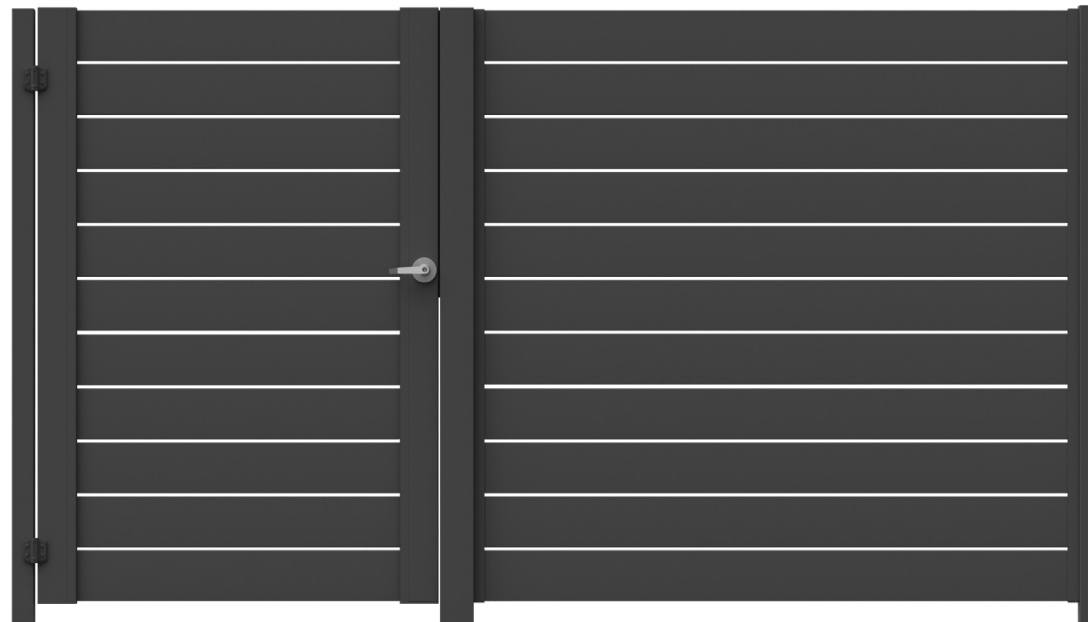
OR Blank Post - 4" x 4" (incl caps) (95" L)

- 2 x Side Frame with Friction Insert and Top & Bottom Plates

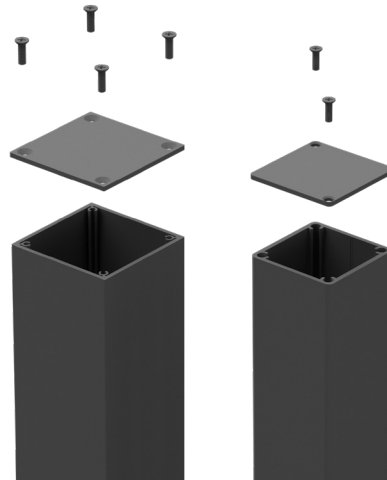
- 10 x 6" x 5/8" slats (95" L)

- 20 x 1" snap in spacers

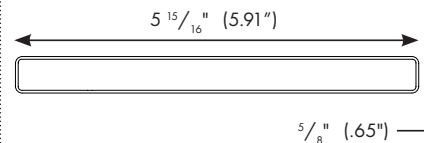
# BLANK POST WITH SIDE FRAME INSTALL METHOD



**4" x 4" Post OR  
2 9/16" x 2 9/16" Post**



**Slat**

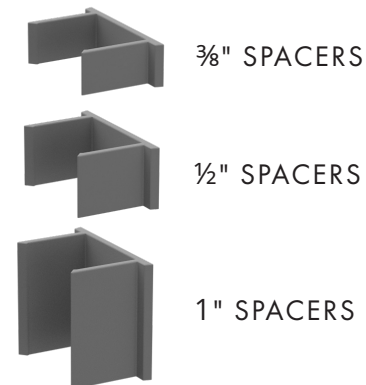


WALL THICKNESS: 14 GAUGE  
F\*<sub>TU</sub> - 262MPa

**Side Frame**



**Spacer blocks**



**Powder coat colors —**



**Material Specifications**

Aluminum 6005/T5 Structural grade alloy

Blank Post - 2 9/16" x 2 9/16" (8 gauge)

Blank Post - 4" x 4" (6 gauge)

Slat - 6" x 5/8" (14 gauge)

Side Frame with Friction Insert and Top & Bottom Plates - 1.26" x 1.1" (14 gauge)

**All Aluminum is manufactured to US and AUS standards including:**

- USA
- ASTM B221 – Aluminum and Aluminum-Alloy Extruded Bars, Rods, Wire, Profiles, and Tubes
- ASTM B557 – Tension Testing of Aluminum Products
- ANSI H35.2-2017 - Tolerances aluminum extrusions

- AUS
- AS/NZS 1866 – Aluminium and aluminium alloys – Extruded rod, bar, solid and hollow shapes
- AS/NZS 1664 – Aluminium structures
- AS 2848.1 – Aluminium and aluminium alloys – Compositions and designation

**Coating and Finishes:**

- AMMA 2604 - Finishing standard Inc
- ASTM B 117 – Salt Spray (Corrosion) Testing
- ASTM D3359 – Adhesion of Coatings
- ASTM D1730 – Preparation of Aluminum Surfaces for Paints/Coatings
- ASTM D4214 - Chalking Resistance.

**Construction and Building applications.**

- AAMA 2604
- ASCE SEI 7-10 - Minimum design loads for buildings and other structures
- AS2159 - Soil properties for footing depths
- AS1530 - Non combustible testing in accordance with ISO 1182.2010
- Australia/NZ – AS/NZS 1530.3 D2525

**72" wide x 71" high Quickscreen slat panel 3/8" spacing**

- 2 x Blank Post - 2 9/16" x 2 9/16" (incl caps ) (95" L)
- OR Blank Post - 4" x 4" (incl caps ) (95" L)
- 2 x Side Frame with Friction Insert and Top & Bottom Plates
- 11 x 6"x 5/8" slats (71" L)
- 48 x 3/8" snap in spacers

**72" wide x 71" high Quickscreen slat panel 1/2" spacing**

- 2 x Blank Post - 2 9/16" x 2 9/16" (incl caps ) (95" L)
- OR Blank Post - 4" x 4" (incl caps ) (95" L)
- 2 x Side Frame with Friction Insert and Top & Bottom Plates
- 11 x 6"x 5/8" slats (71" L)
- 46 x 1/2" snap in spacers

**72" wide x 71" high Quickscreen slat panel 1" spacing**

- 2 x Blank Post - 2 9/16" x 2 9/16" (incl caps ) (95" L)
- OR Blank Post - 4" x 4" (incl caps ) (95" L)
- 2 x Side Frame with Friction Insert and Top & Bottom Plates
- 10 x 6"x 5/8" slats (71" L)
- 40 x 1" snap in spacers

**96" wide x 71" high Quickscreen slat panel 3/8" spacing**

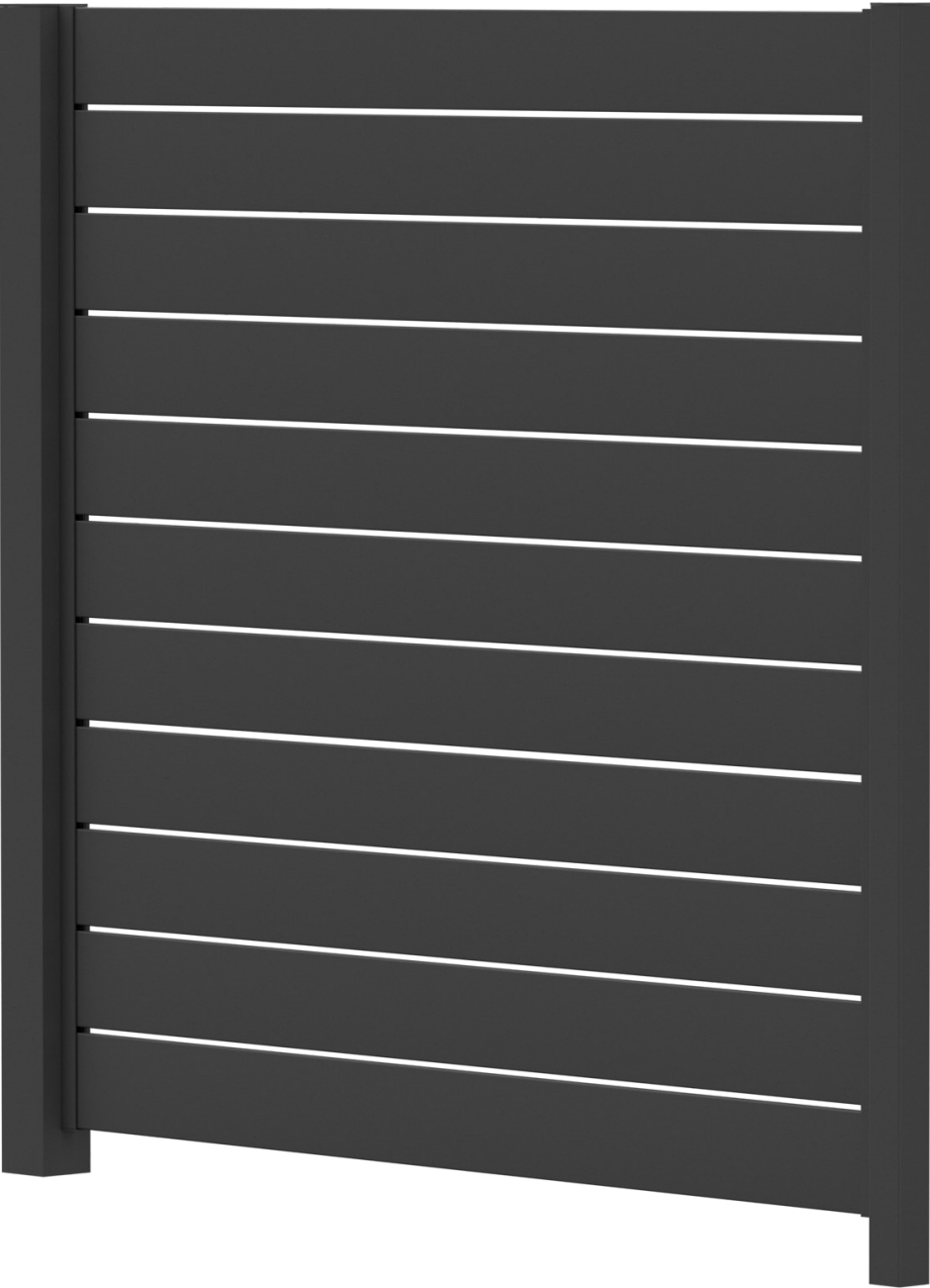
- 2 x Blank Post - 2 9/16" x 2 9/16" (incl caps ) (95" L)
- OR Blank Post - 4" x 4" (incl caps ) (95" L)
- 2 x Side Frame with Friction Insert and Top & Bottom Plates
- 11 x 6"x 5/8" slats (95" L)
- 22 x 3/8" snap in spacers

**96" wide x 71" high Quickscreen slat panel 1/2" spacing**

- 2 x Blank Post - 2 9/16" x 2 9/16" (incl caps ) (95" L)
- OR Blank Post - 4" x 4" (incl caps ) (95" L)
- 2 x Side Frame with Friction Insert and Top & Bottom Plates
- 11 x 6"x 5/8" slats (95" L)
- 22 x 1/2" snap in spacers

**96" wide x 71" high Quickscreen slat panel 1" spacing**

- 2 x Blank Post - 2 9/16" x 2 9/16" (incl caps ) (95" L)
- OR Blank Post - 4" x 4" (incl caps ) (95" L)
- 2 x Side Frame with Friction Insert and Top & Bottom Plates
- 10 x 6"x 5/8" slats (95" L)
- 20 x 1" snap in spacers



**Powder coat colors —**



**Material Specifications**

Aluminum 6005/T5 Structural grade alloy

Blank Post - 2 9/16" x 2 9/16" (8 gauge)

Blank Post - 4" x 4" (6 gauge)

Slat - 6" x 5/8" (14 gauge)

Side Frame with Friction Insert and Top & Bottom Plates - 1.26" x 1.1" (14 gauge)

**All Aluminum is manufactured to US and AUS standards including:**

- USA
- ASTM B221 – Aluminum and Aluminum-Alloy Extruded Bars, Rods, Wire, Profiles, and Tubes
- ASTM B557 – Tension Testing of Aluminum Products
- ANSI H35.2-2017 - Tolerances aluminum extrusions

- AUS
- AS/NZS 1866 – Aluminium and aluminium alloys – Extruded rod, bar, solid and hollow shapes
- AS/NZS 1664 – Aluminium structures
- AS 2848.1 – Aluminium and aluminium alloys – Compositions and designation

**Coating and Finishes:**

- AMMA 2604 - Finishing standard Inc
- ASTM B 117 – Salt Spray (Corrosion) Testing
- ASTM D3359 – Adhesion of Coatings
- ASTM D1730 – Preparation of Aluminum Surfaces for Paints/Coatings
- ASTM D4214 - Chalking Resistance.

**Construction and Building applications.**

- AAMA 2604
- ASCE SEI 7-10 - Minimum design loads for buildings and other structures
- AS2159 - Soil properties for footing depths
- AS1530 - Non combustible testing in accordance with ISO 1182.2010
- Australia/NZ – AS/NZS 1530.3 D2525

**72" wide x 71" high Quickscreen slat panel 3/8" spacing**

- 2 x Blank Post - 2 9/16" x 2 9/16" (incl caps) (95" L)
- OR Blank Post - 4" x 4" (incl caps) (95" L)
- 2 x Side Frame with Friction Insert and Top & Bottom Plates
- 11 x 6"x 5/8" slats (71" L)
- 48 x 3/8" snap in spacers

**72" wide x 71" high Quickscreen slat panel 1/2" spacing**

- 2 x Blank Post - 2 9/16" x 2 9/16" (incl caps) (95" L)
- OR Blank Post - 4" x 4" (incl caps) (95" L)
- 2 x Side Frame with Friction Insert and Top & Bottom Plates
- 11 x 6"x 5/8" slats (71" L)
- 46 x 1/2" snap in spacers

**72" wide x 71" high Quickscreen slat panel 1" spacing**

- 2 x Blank Post - 2 9/16" x 2 9/16" (incl caps) (95" L)
- OR Blank Post - 4" x 4" (incl caps) (95" L)
- 2 x Side Frame with Friction Insert and Top & Bottom Plates
- 10 x 6"x 5/8" slats (71" L)
- 40 x 1" snap in spacers

**96" wide x 71" high Quickscreen slat panel 3/8" spacing**

- 2 x Blank Post - 2 9/16" x 2 9/16" (incl caps) (95" L)
- OR Blank Post - 4" x 4" (incl caps) (95" L)
- 2 x Side Frame with Friction Insert and Top & Bottom Plates
- 11 x 6"x 5/8" slats (95" L)
- 22 x 3/8" snap in spacers

**96" wide x 71" high Quickscreen slat panel 1/2" spacing**

- 2 x Blank Post - 2 9/16" x 2 9/16" (incl caps) (95" L)
- OR Blank Post - 4" x 4" (incl caps) (95" L)
- 2 x Side Frame with Friction Insert and Top & Bottom Plates
- 11 x 6"x 5/8" slats (95" L)
- 22 x 1/2" snap in spacers

**96" wide x 71" high Quickscreen slat panel 1" spacing**

- 2 x Blank Post - 2 9/16" x 2 9/16" (incl caps) (95" L)
- OR Blank Post - 4" x 4" (incl caps) (95" L)
- 2 x Side Frame with Friction Insert and Top & Bottom Plates
- 10 x 6"x 5/8" slats (95" L)
- 20 x 1" snap in spacers

I II I



11

→

→

→

11

I I



11

**Powder coat colors —**



**Material Specifications**

Aluminum 6005/T5 Structural grade alloy

Univesal Post - 2 9/16" x 2 9/16" (8 gauge)

Slat - 6" x 5/8" (14 gauge)

**All Aluminum is manufactured to US and AUS standards including:**

- USA
- ASTM B221 – Aluminum and Aluminum-Alloy Extruded Bars, Rods, Wire, Profiles, and Tubes
- ASTM B557 – Tension Testing of Aluminum Products
- ANSI H35.2-2017 - Tolerances aluminum extrusions

- AUS
- AS/NZS 1866 – Aluminium and aluminium alloys – Extruded rod, bar, solid and hollow shapes
- AS/NZS 1664 – Aluminium structures
- AS 2848.1 – Aluminium and aluminium alloys – Compositions and designation

**Coating and Finishes:**

- AMMA 2604 - Finishing standard Inc
- ASTM B117 – Salt Spray (Corrosion) Testing
- ASTM D3359 – Adhesion of Coatings
- ASTM D1730 – Preparation of Aluminum Surfaces for Paints/Coatings
- ASTM D4214 - Chalking Resistance.

**Construction and Building applications.**

- AAMA 2604
- ASCE SEI 7-10 - Minimum design loads for buildings and other structures
- AS2159 - Soil properties for footing depths
- AS1530 - Non combustible testing in accordance with ISO 1182.2010
- Australia/NZ – AS/NZS 1530.3 D2525

**Single Gate (42 wide ) 3/8" Spacing**

- 2 x gate frames Inc screw cover (72" L)
- 1 x Gate frame kit (4 caps and screws)
- SS304 screws HD 12G Qty
- 6 x 6" x 5/8" slats[cut into 2] (71" L)
- 22 x 3/8" snap in spacers

**Single Gate (42 wide ) 1/2" Spacing**

- 2 x gate frames Inc screw cover (72" L)
- 1 x Gate frame kit (4 caps and screws)
- SS304 screws HD 12G Qty
- 6 x 6" x 5/8" slats (cut into 2) (71" L)
- 22 x 1/2" snap in spacers

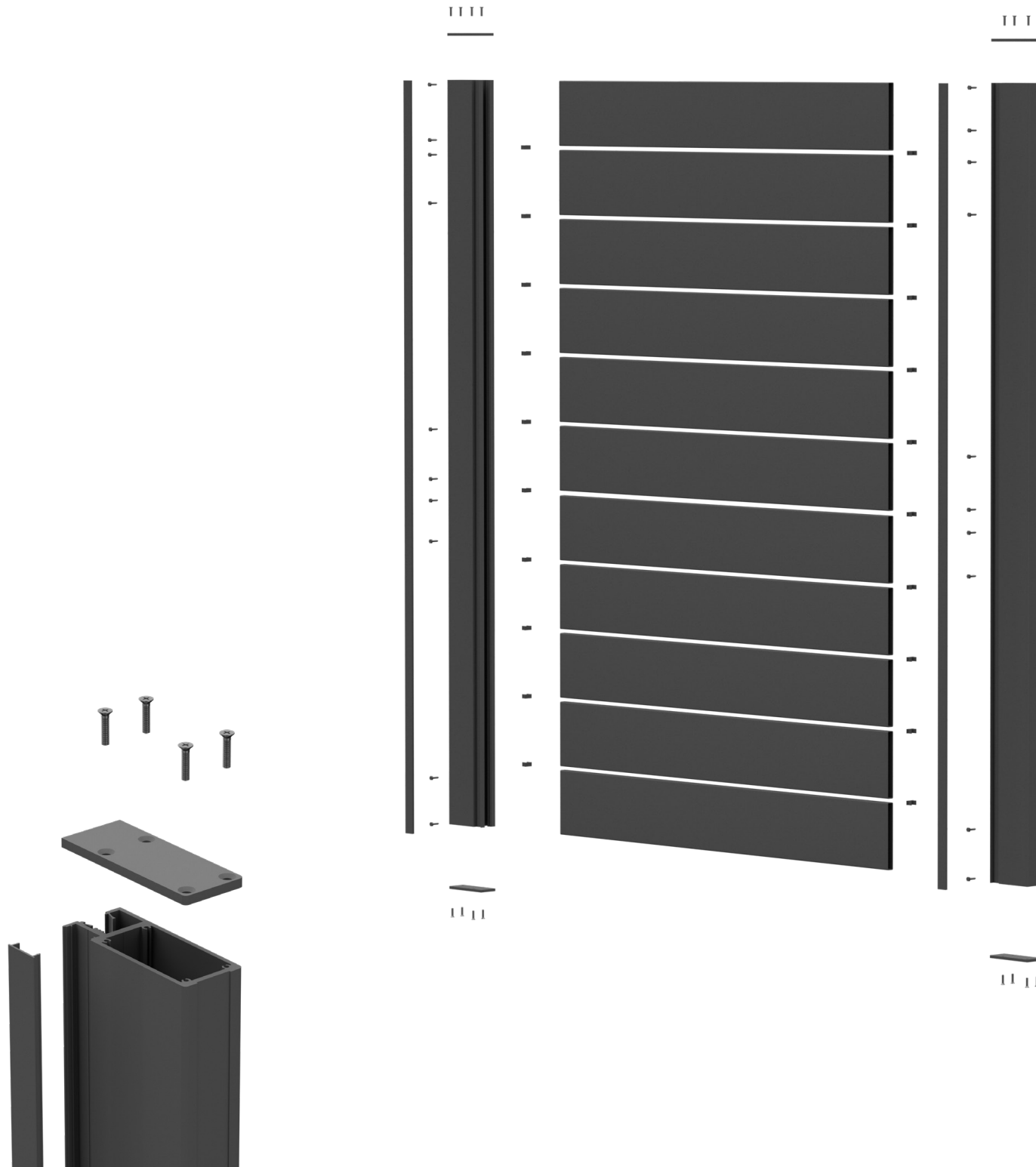
**Single Gate (42 wide ) 1" Spacing**

- 2 x gate frames Inc screw cover (72" L)
- 1 x Gate frame kit (4 caps and screws)
- SS304 screws HD 12G Qty
- 5 x 6" x 5/8" slats (cut into 2) (71" L)
- 20 x 1" snap in spacers

**Gate Dimensions**

Gate is width adjustable - Min 2' up to 8'6" Wide (single leaf)  
Gate is height adjustable - Min 3' up to 8' High (single leaf)  
Gate will take most locks including mortise, cylinder and electronic key pad configurations.

# GATE OPTIONS



**Powder coat colors —**



**Material Specifications**

Aluminum 6005/T5 Structural grade alloy

Univesal Post - 2 9/16" x 2 9/16" (8 gauge)

Slat - 2 9/16" x 5/8" (16 gauge)

**All Aluminum is manufactured to US and AUS standards including:**

- USA
  - ASTM B221 – Aluminum and Aluminum-Alloy Extruded Bars, Rods, Wire, Profiles, and Tubes
  - ASTM B557 – Tension Testing of Aluminum Products
  - ANSI H35.2-2017 - Tolerances aluminum extrusions
- AUS
  - AS/NZS 1866 – Aluminium and aluminium alloys – Extruded rod, bar, solid and hollow shapes
  - AS/NZS 1664 – Aluminium structures
  - AS 2848.1 – Aluminium and aluminium alloys – Compositions and designation

**Coating and Finishes:**

- AMMA 2604 - Finishing standard Inc
- ASTM B 117 – Salt Spray (Corrosion) Testing
- ASTM D3359 – Adhesion of Coatings
- ASTM D1730 – Preparation of Aluminum Surfaces for Paints/Coatings
- ASTM D4214 - Chalking Resistance.

**Construction and Building applications.**

- AAMA 2604
- ASCE SEI 7-10 - Minimum design loads for buildings and other structures
- AS2159 - Soil properties for footing depths
- AS1530 - Non combustible testing in accordance with ISO 1182.2010
- Australia/NZ – AS/NZS 1530.3 D2525

**Double gate ( 192" wide )**

- 4 x gate frames Inc screw cover (72" L)
- 2 x Gate frame kit [4 caps and screws]
- SS304 screws HD 12G Qty
- 21 x 6" x 5/8" slats (95" L)
- 44 x 3/8" snap in spacers

**Double gate ( 192" wide )**

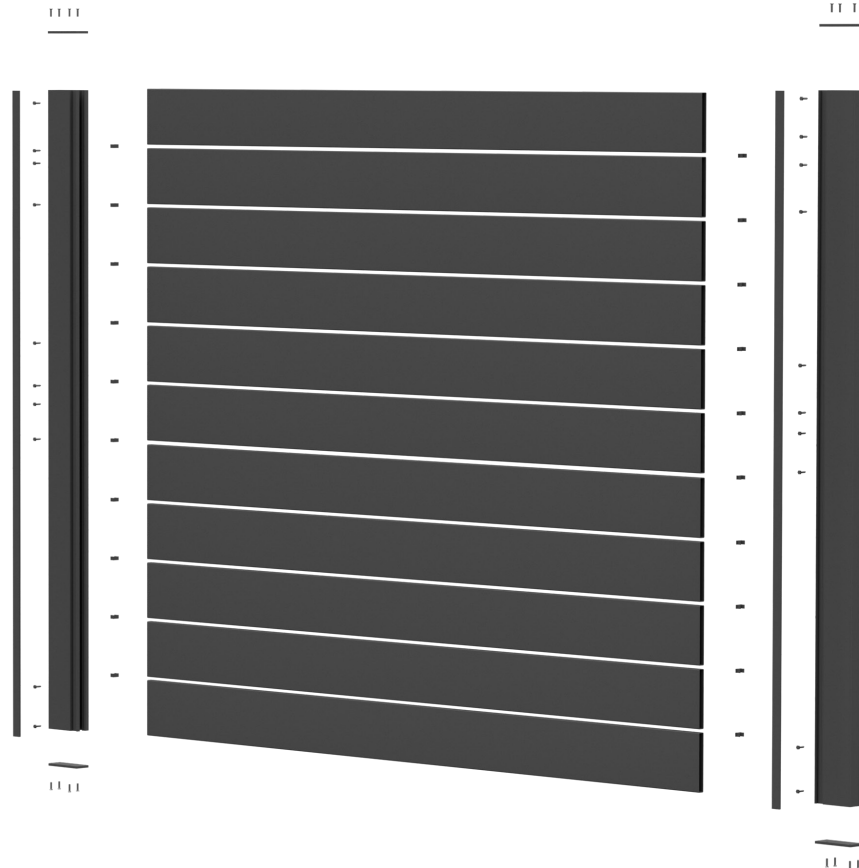
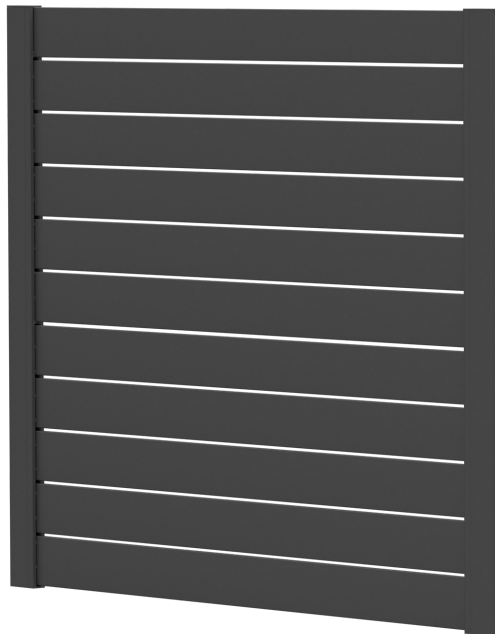
- 4 x gate frames Inc screw cover (72" L)
- 2 x Gate frame kit [4 caps and screws]
- SS304 screws HD 12G Qty
- 21 x 6" x 5/8" slats (95" L)
- 44 x 1/2" snap in spacers

**Double gate ( 192" wide )**

- 4 x gate frames Inc screw cover (72" L)
- 2 x Gate frame kit [4 caps and screws]
- SS304 screws HD 12G Qty
- 20 x 6" x 5/8" slats (95" L)
- 40 x 1" snap in spacers

**Gate Dimensions**

Gate is width adjustable - Min 2' up to 8'6" Wide (single leaf)  
Gate is height adjustable - Min 3' up to 8' High (single leaf)  
Gate will take most locks including mortise, cylinder and electronic key pad configurations.



**Powder coat colors —**

